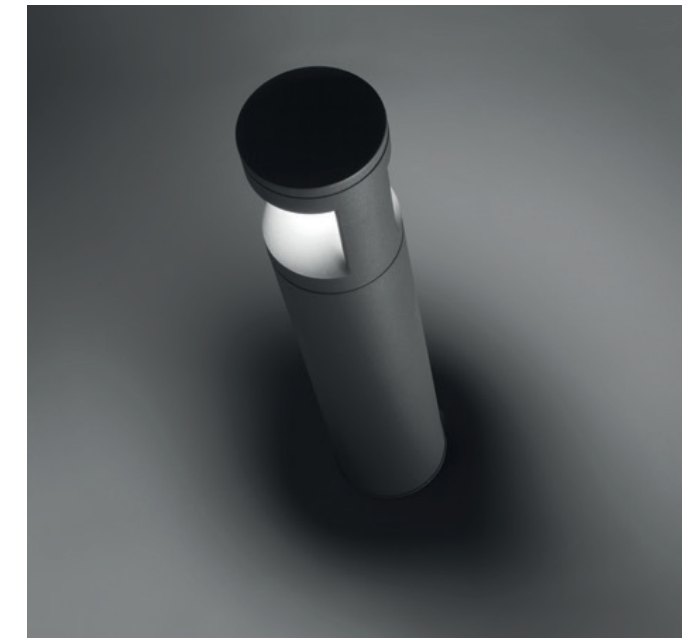


# NEBULA

The Nebula bollard is a minimalist masterpiece designed to enhance urban landscapes. Available in four heights from 0.385m to 1.185m, it offers versatile lighting solutions. With asymmetric or double asymmetric light distribution options, Nebula caters to various applications, from illuminating walkways and bike paths to creating an inviting ambiance in relaxation areas. Its robust construction, featuring IP65 and IK10 ratings, ensures durability and resistance to external factors. Nebula combines form and function, providing efficient and stylish lighting for modern outdoor spaces.



• Light Distribution	asymmetric double asymmetric
• Net Lumen Output (at Ta=25°C)	260 lm 530 lm
• Power Consumption	9 W 19 W
• System Efficacy	28-29 lm/W
• Chromacity	3-step MacAdam
• Colour rendering index	> 90
• Colour temperature	3000 K, on request 2200 K, 2700 K, 4000 K, RGBW
• Wiring	FIX, on request dimmable
• Optical System	Diffuser
• Materials	Housing: Die-cast aluminium and extruded aluminium Diffuser: opal polycarbonate
• Surface Finish	Polyester powder paint
• Service Lifetime (Ta 40°C)	60,000 hours/L80/B15
• Dimmensions (L x W x H)	038    ø 140 x 385 mm 068    ø 140 x 685 mm 093    ø 140 x 935 mm 118    ø 140 x 1185 mm

220-240V 50-60Hz	LED	CHROMATICITY 3 SDCM	CRI 90+ Ra	CCT 3000 K	ECG	⊥	IP 65	IK 10
---------------------	-----	---------------------------	------------------	------------------	-----	---	----------	----------