

Somir

Innovative resistant luminaire for tough condition



Product description

SOMIR luminaires are built tough, combining the strengths of extrusion and injection molding for superior durability and versatility. They boast a high ingress protection rating of IP66, making them dust-tight and resistant to powerful water jets. If you need an even greater level of protection, SOMIR can be customized to meet IP69K standards, ensuring they can withstand high-pressure, high-temperature washdowns. Their innovative lever-locking system allows for quick and secure mounting while deterring vandalism. Additionally, SOMIR can be configured to handle high temperatures, meeting the specific needs of your project.

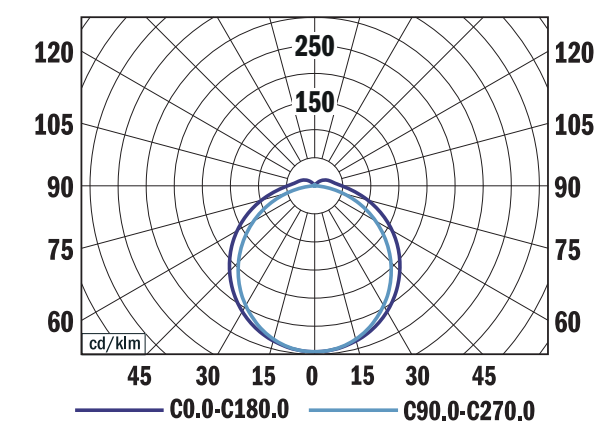
The innovative lever and end cap design enables easy opening and closing of the luminaire for fast access to the gear tray. This simplifies maintenance tasks like replacing emergency batteries or connecting multiple luminaires in a continuous line. The same lever system that ensures quick access also doubles as a vandal-resistant feature when secured with a security screw.

For projects requiring continuous lines of lighting, up to 15 luminaires can be effortlessly connected in a single row thanks to the built-in through wiring. This system is compatible with dimmable versions and features a user-friendly locking mechanism between profiles for a seamless and secure connection.

Technical features:

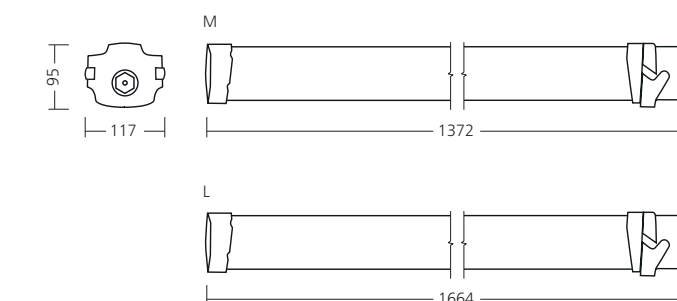
- Optical system: opal diffuser
- Housing: extruded polycarbonate
- End caps: injected polycarbonate
- Diffuser: polycarbonate
- Gasket: removable and recyclable thermoplastic elastomers
- Accesories: rope suspension, wall mounting accessory, theft protection (required for wall mounting), clips in stainless steel
- Chromaticity: 3-step MacAdam
- Colour rendering index: min. 80

Photometry

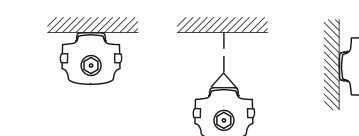


SOMIR M, 4000 lm 4000 K
 LOR = 100%
 lower flux fraction 93%
 upper flux fraction 7%
 UGR < 28

Dimensions



Mounting



- Colour temperature: 4000K
- Electronic control gear: FIX (ECG), DALI (EDA)
- Service lifetime: 100,000 hours/L80/B50 (ta 35°C)
- Ambient temperature: Ta = -30°C...+45°C (26/41W), -30°C...+55°C (58W), -40°C...+50°C (64W)
- Degree of protection: IP66, IK10
- Dimensions: M 1372 x 117 x 95 mm, L 1664 x 117 x 95 mm

TYPE	NET LUMEN OUTPUT (at Ta = 25 °C) (lm)	POWER CONSUMPTION (W)	SYSTEM EFFICACY (lm/W)	COLOUR RENDERING INDEX	CORRELATED COLOUR TEMPERATURE (K)	WEIGHT (kg)
SOMIR M	4000	26	154	80+	4000	2.7
SOMIR L	6000	41	146	80+	4000	3.4
SOMIR L	8000	58	138	80+	4000	3.4
SOMIR L	10,000	64	156	80+	4000	3.4

220-240V 50-60Hz
 LED
 CHROMATICITY 3 SDCM
 CRI 80+ Ra
 CCT 4000 K
 ECG
 EDA DALI
 IP 66
 IK 10

More specification on the next side.

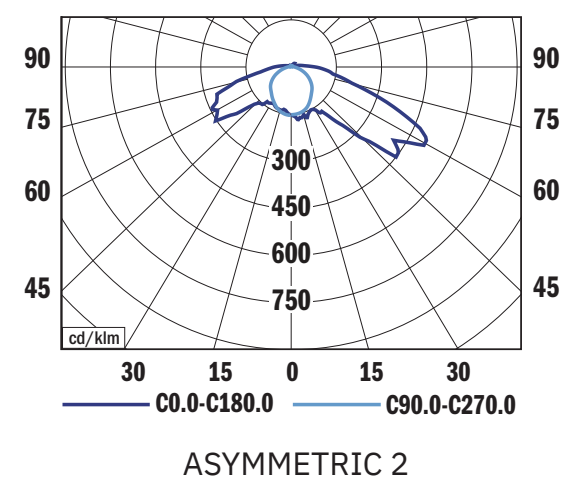
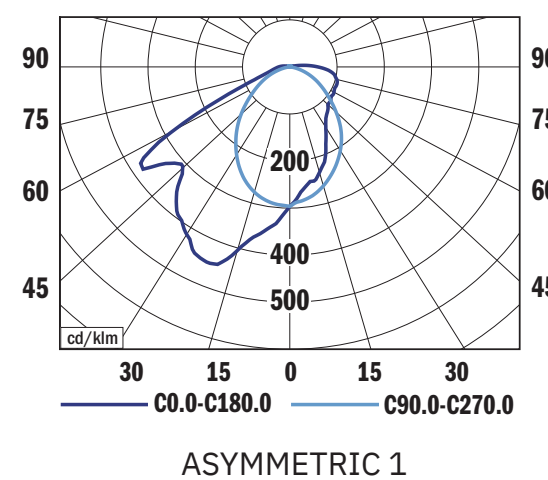
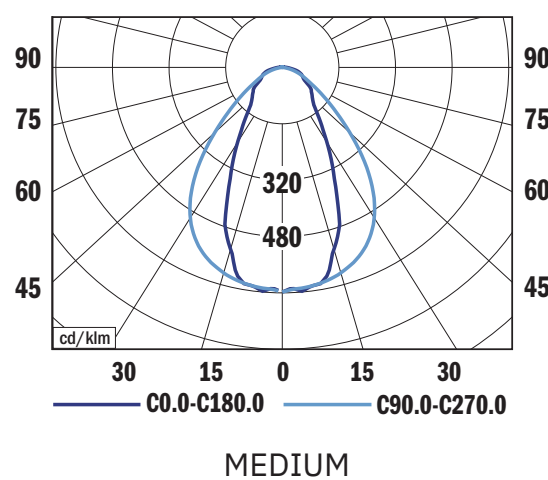
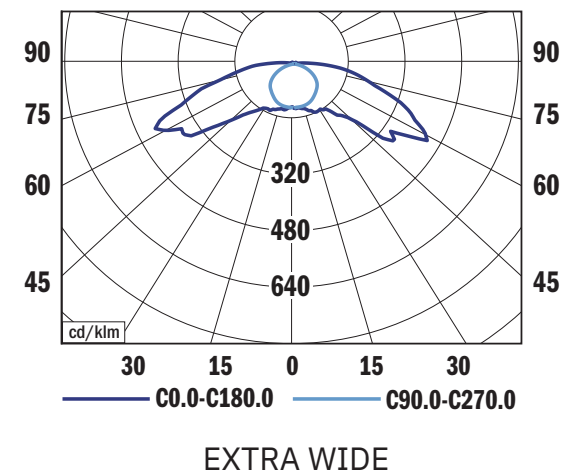
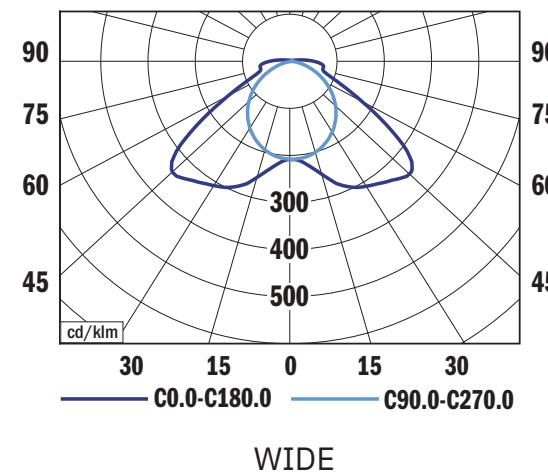
Somir

Special options under request

- Degree of protection IP69K
- Colour rendering index: min. 90
- Colour temperature: 3000K, 5000K or 6500K
- Constant Lumen Output
- Housing: resistant polycarbonate
- Through wiring up to 8 poles
- Emergency unit variant
- High temperature versions -40°C...+55°C
- Protection Class II
- Additional modules: Presence and daylight sensor, Wireless solution

Other variations of lighting solutions for better illumination:
 MEDIUM
 WIDE
 EXTRA WIDE
 ASYMMETRIC 1
 ASYMMETRIC 2

Luminous flux Up to 15,000lm
 Efficiency Up to 165lm/W



Continuous line lighting units
 It is possible to connect up to 15 lighting units in one line, thanks to its through wiring ready for dimmable versions and the easy and quick locking system between profiles.

