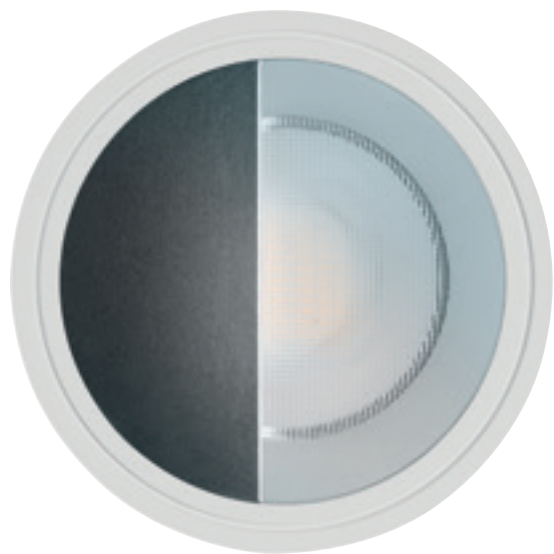
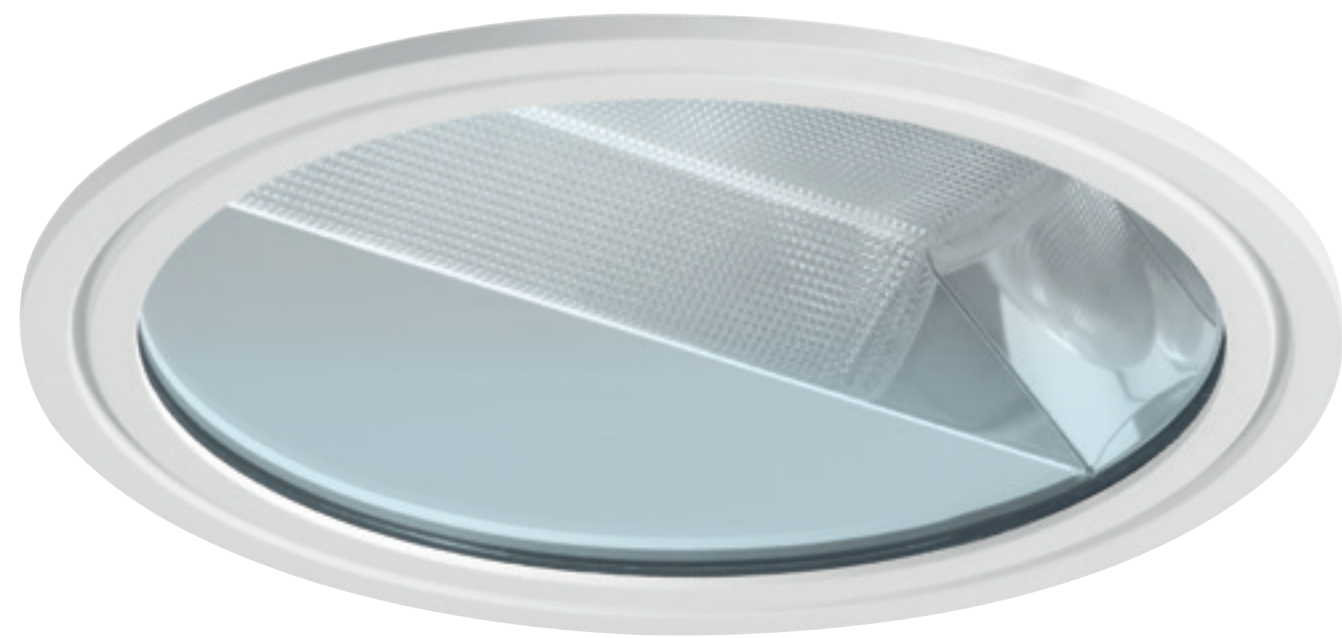
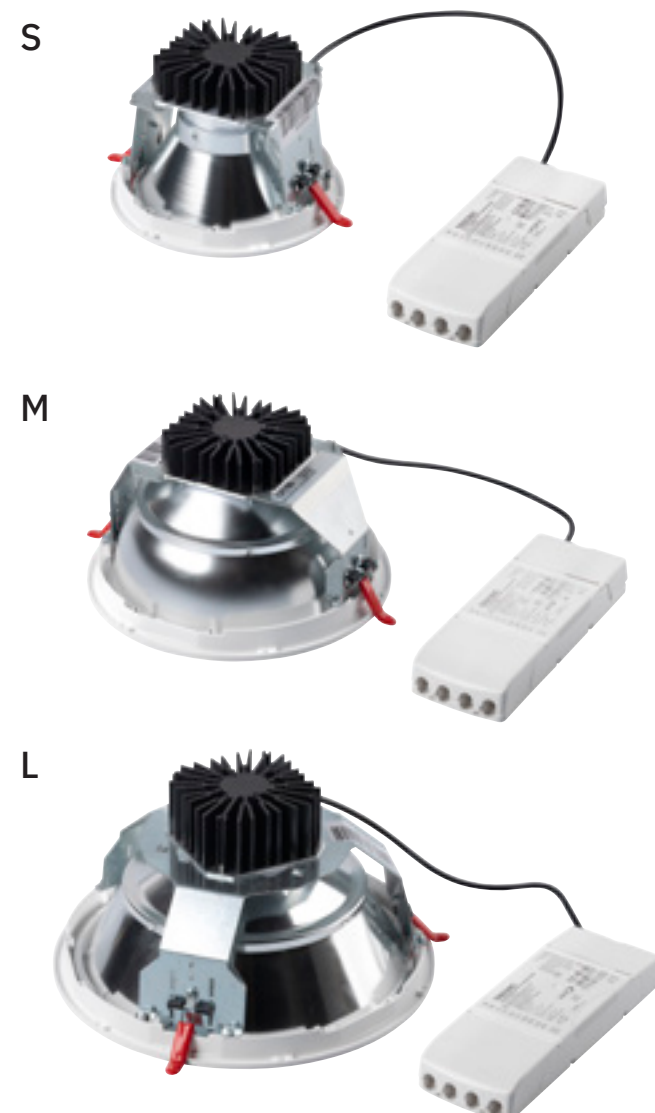


Prettus IP54 Asymmetric

Round modern and functional asymmetric downlight



220-240V 50-60Hz	LED	CHROMATICITY 3 SDCM	CRI 80+ Ra
CCT 3000 K	CCT 4000 K	ECG	
EDA DALI		IP 20	IP 54



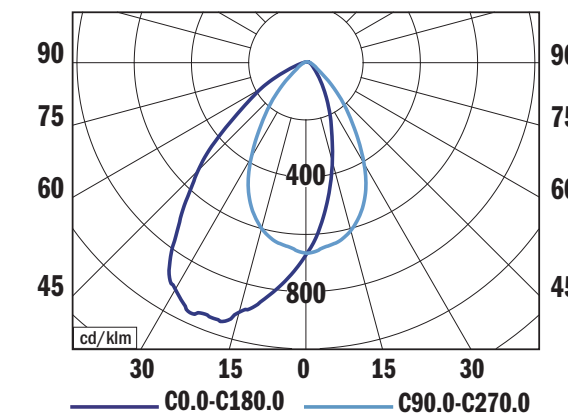
Product description

Prettus presents a series of modern and functional downlights in three dimensions, characterized by a wide range of features and options, which make it ideal for different types of interiors. Powerful enough for asymmetric architectural illumination in malls, galleries, corridors, and other spaces, and for creating ambient lighting on walls. It uses an optical system that combines a diffuser and a reflector. This combination makes it possible to achieve optimal light distribution and eliminate unwanted glare.

Technical features:

- Optical system: polished reflector + cover (APT)
- Housing: sheet steel
- Diffuser: microprismatic PMMA
- Trim: die-cast aluminium
- Reflector: polished anodised aluminium
- Cover: transparent PMMA
- Chromaticity: 3-step MacAdam
- Colour rendering index: min. 80, on request min. 90
- Colour temperature: 3000K, 4000K
- Electronic control gear: FIX (ECG), DALI (EDA)

Photometry

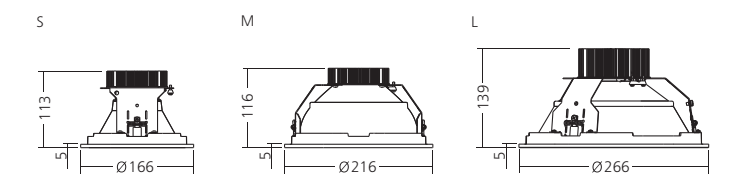


PRETTUS ASYMMETRIC L APT, 2850 lm 4000 K
LOR = 100%
lower flux fraction 100%
upper flux fraction 0%

- Service lifetime: 100,000 hours/L90/B20 (ta 25°C)
- Ambient temperature: Ta = -20°C...+35°C
- Degree of protection: IP20, optical part IP54
- Dimensions: S ø166 x 113 mm, M ø216 x 116 mm, L ø266 x 139 mm
- Cutout: S ø154 mm, M ø204 mm, L ø254 mm

TYPE	NET LUMEN OUTPUT (at Ta = 25 °C) (lm)	POWER CONSUMPTION (W)	SYSTEM EFFICACY (lm/W)	COLOUR RENDERING INDEX	CORRELATED COLOUR TEMPERATURE (K)	WEIGHT (kg)
PRETTUS ASYMMETRIC S	1500	15	100	80+	3000	0.9
PRETTUS ASYMMETRIC S	1550	15	103	80+	4000	0.9
PRETTUS ASYMMETRIC S	1950	19	103	80+	3000	0.9
PRETTUS ASYMMETRIC S	2000	19	105	80+	4000	0.9
PRETTUS ASYMMETRIC M	1850	19	97	80+	3000	1.0
PRETTUS ASYMMETRIC M	1900	19	100	80+	4000	1.0
PRETTUS ASYMMETRIC M	2500	24	104	80+	3000	1.0
PRETTUS ASYMMETRIC M	2600	24	108	80+	4000	1.0
PRETTUS ASYMMETRIC L	2750	29	95	80+	3000	1.4
PRETTUS ASYMMETRIC L	2850	29	98	80+	4000	1.4
PRETTUS ASYMMETRIC L	3300	33	100	80+	3000	1.4
PRETTUS ASYMMETRIC L	3450	33	105	80+	4000	1.4

Dimensions



Mounting

