

Plast PMD

Modern linear luminaire with clever design



Product description

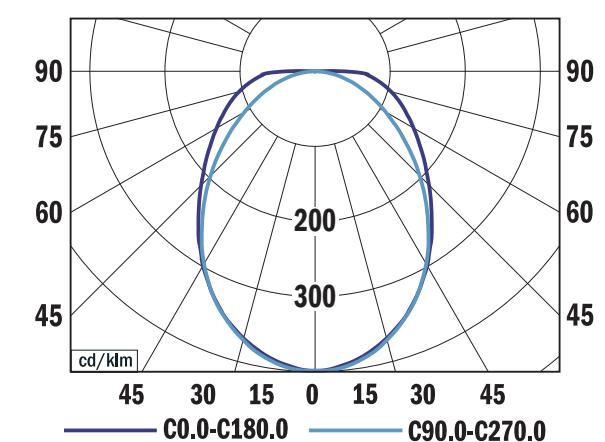
The Plast PMD luminaire joins the ranks of reliable lighting solutions for corridors, stairwells, and storage spaces. Specific design luminaire in this category offers a choice between surface-mounted or suspended installation for your specific needs. The housing is constructed from sturdy sheet steel, while the diffuser utilizes impact-resistant polycarbonate.

The Plast PMD comes in two lengths to accommodate various space requirements. Its simple mounting process ensures quick and easy installation, minimizing disruption to your workflow. This dependable luminaire provides a familiar design with the added benefit of easy installation, making it a practical choice for your everyday lighting needs.

Technical features:

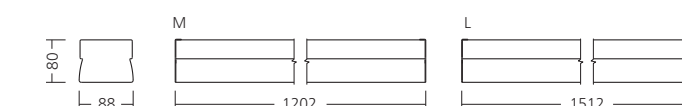
- Optical system: opal diffuser
- Housing: sheet steel
- Diffuser and end caps: polycarbonate
- Accesories: rope suspension
- Chromacity: 3-step MacAdam
- Colour rendering index: min. 80
- Colour temperature: 3000K, 4000K
- Electronic control gear: FIX (ECG), DALI (EDA)
- Service lifetime: 100,000 hours/L90/B10 (ta 25°C)
- Ambient temperature: Ta = -25°C...+35°C
- Degree of protection: IP40
- Dimmensions: M 1202 x 88 x 80 mm, L 1512 x 88 x 80 mm

Photometry

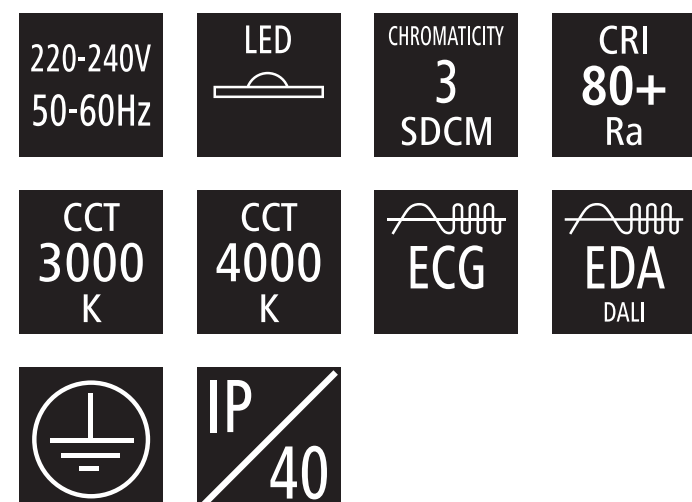
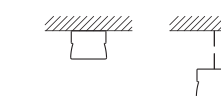


PLAST PMD M, 3250 lm 4000 K
LOR = 100%
lower flux fraction 100%
upper flux fraction 0%
UGR > 28

Dimmensions



Mounting



TYPE	NET LUMEN OUTPUT (at Ta = 25 °C) (lm)	POWER CONSUMPTION (W)	SYSTEM EFFICACY (lm/W)	COLOUR RENDERING INDEX	CORRELATED COLOUR TEMPERATURE (K)	BEAM ANGLE	WEIGHT (kg)
PLAST PMD M	3100	27	115	80+	3000	95°, 90°	3.7
PLAST PMD M	3250	27	120	80+	4000	95°, 90°	3.7
PLAST PMD L	4400	40	110	80+	3000	95°, 90°	4.2
PLAST PMD L	4600	40	115	80+	4000	95°, 90°	4.2