

GRATE UNO / DUO / TRIO / QUATRO

The GRATE luminaire family offers a variety of sizes to suit your needs, from the UNO for smaller spaces to the QUATRO for expansive areas. Each luminaire utilizes a spring-loaded fastening system for quick and secure installation in ceilings of varying thicknesses.

Their innovative design combines high-efficiency lenses and reflectors to deliver exceptional lighting for offices and commercial settings. The cleverly concealed light sources provide a visually comfortable environment, minimizing glare and ensuring UGR levels below 16.

GRATE UNO



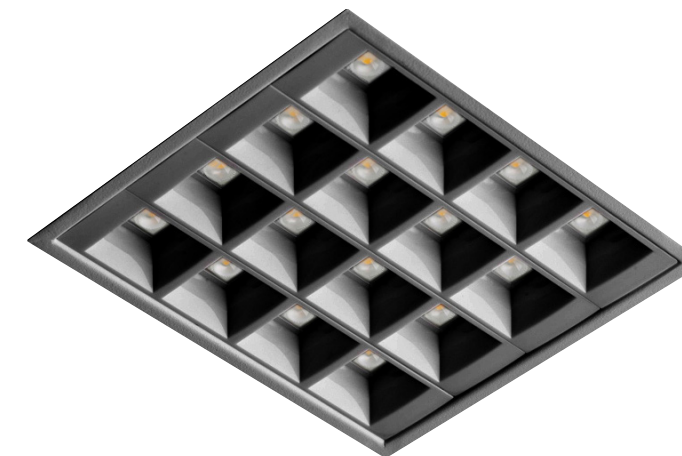
GRATE DUO



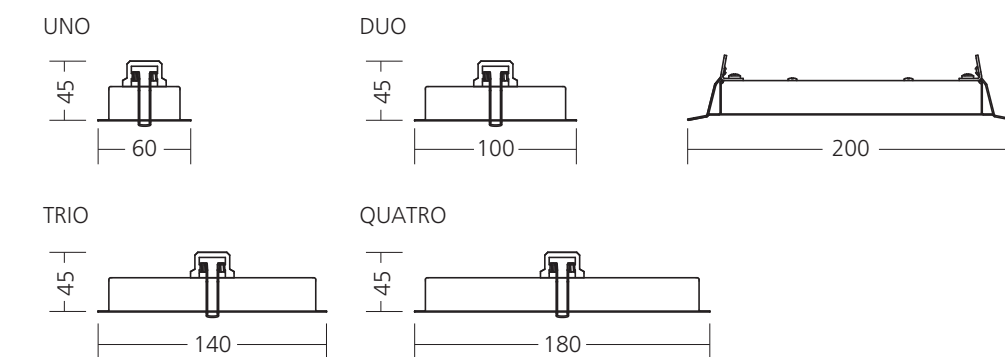
GRATE TRIO



GRATE QUATRO



- Net Lumen Output (at Ta=25°C) 600 lm, 650 lm, 1250 lm, 1300 lm, 1900 lm, 2000 lm, 2500 lm, 2650 lm
- Power Consumption 5 W, 10 W, 15 W, 20 W
- System Efficacy 120-133 lm/W
- Chromacity 3-step MacAdam
- Colour rendering index > 80
- Colour temperature 3000 K, 4000 K
- Wiring FIX, DALI
- Optical System Lenses + louvre
- Beam Angle (C0-180, C90-270) 90°
- Materials Housing: sheet steel
Lenses: PMMA
Louvre: polycarbonate
- Surface Finish Black
- Service Lifetime (Ta 25°C) 100,000 hours/L80/B10
- Ambient Operating Temp. From -25 °C to +35 °C



220-240V 50-60Hz	LED	CHROMATICITY 3 SDCM	CRI 80+ Ra	CCT 3000 K	CCT 4000 K	ECG	EDA DALI	IP 20
---------------------	-----	---------------------------	------------------	------------------	------------------	-----	-------------	----------