

where
tradition
meets
tomorrow



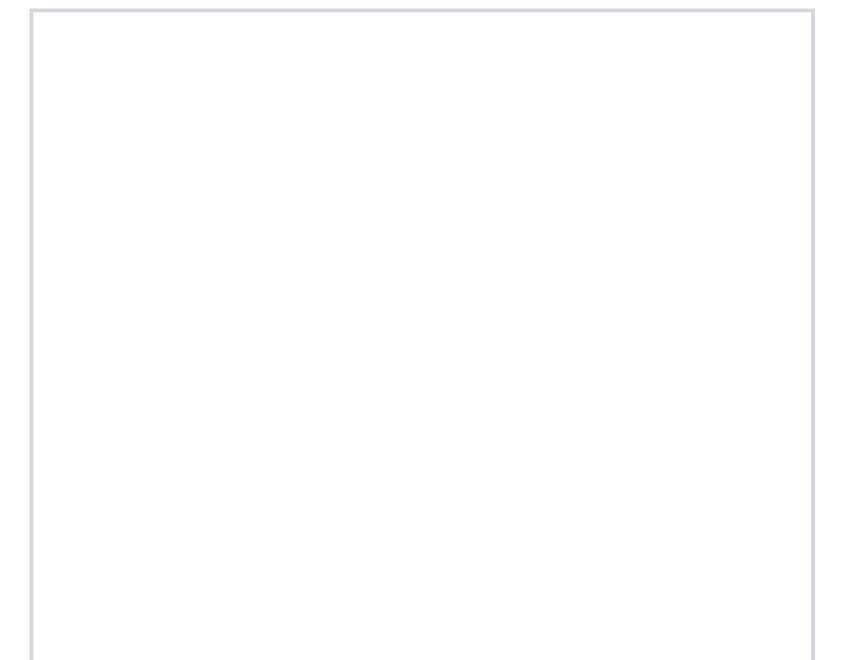
oms
WHERE TRADITION MEETS TOMORROW

Outdoor
Architectural catalogue

Click on
the theme 

| | |
|----|---|
| 3 | Product overview |
| 7 | The company |
| 8 | We are your reliable partner |
| 9 | Customer satisfaction |
| 10 | We take full responsibility for our shared planet |
| 11 | We take pleasure in sharing our know-how with you, our partners |
| 13 | Quality LEDs brings better light |
| 14 | Energy saving |
| 15 | Smart urban lighting |
| 16 | GROUND RECESSED |
| 20 | RECESSED |
| 23 | SURFACED |
| 26 | PROJECTORS |
| 29 | WALL |
| 35 | BOLLARDS |
| 39 | POLES |

Ground recessed



Recessed



Surfaced



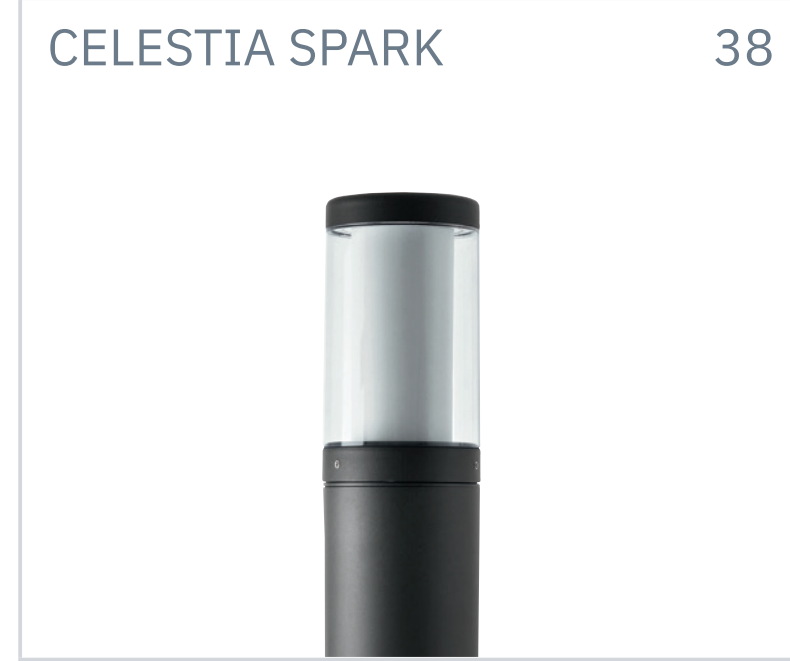
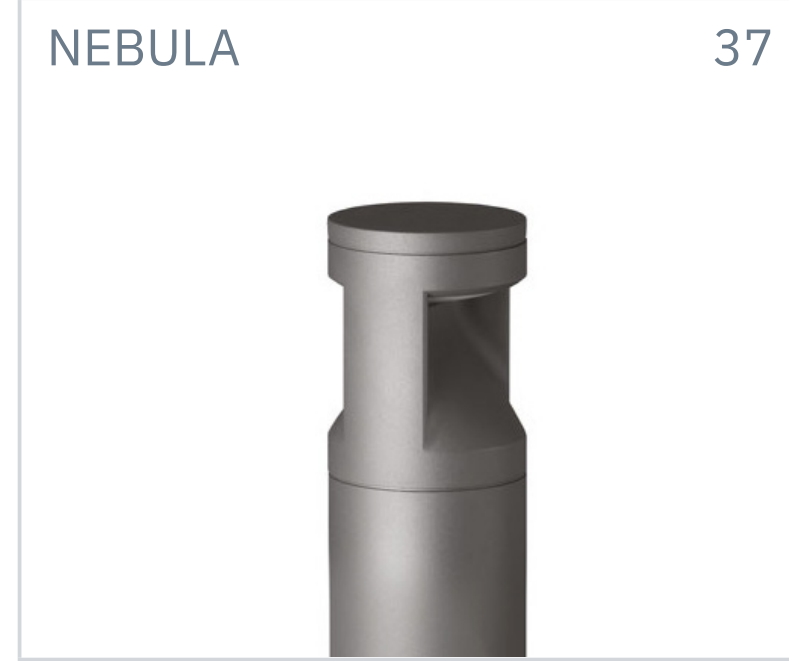
Projectors



Wall



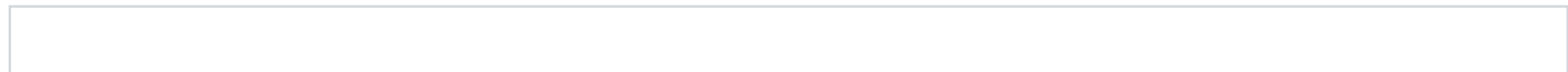
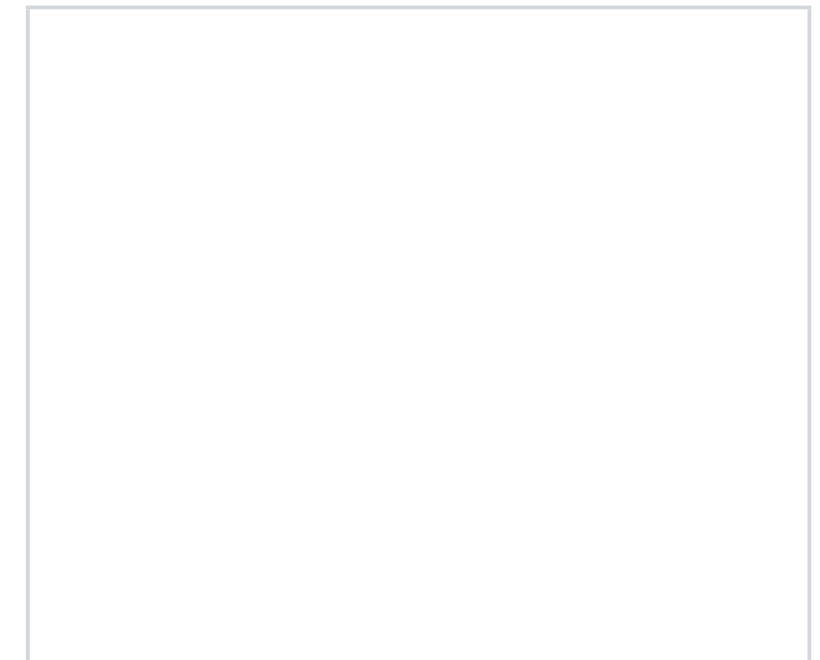
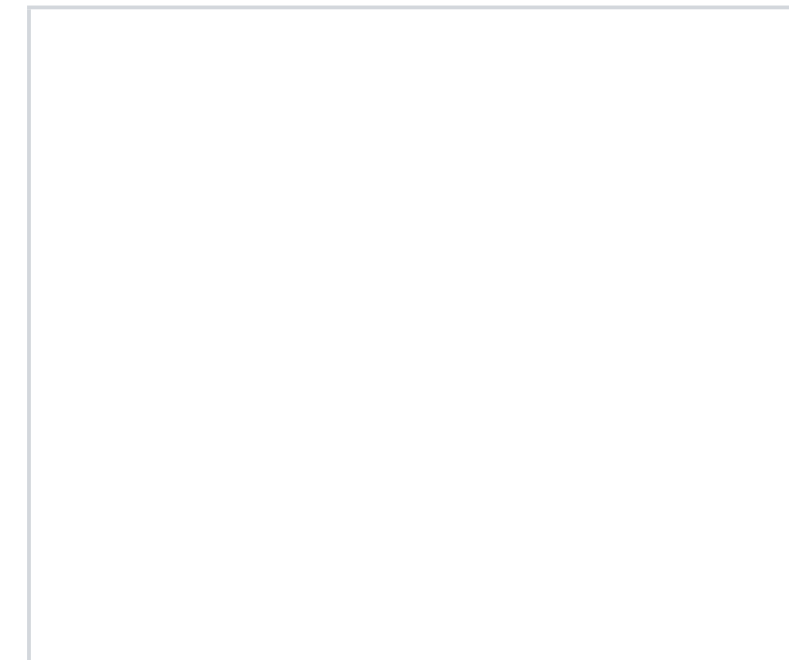
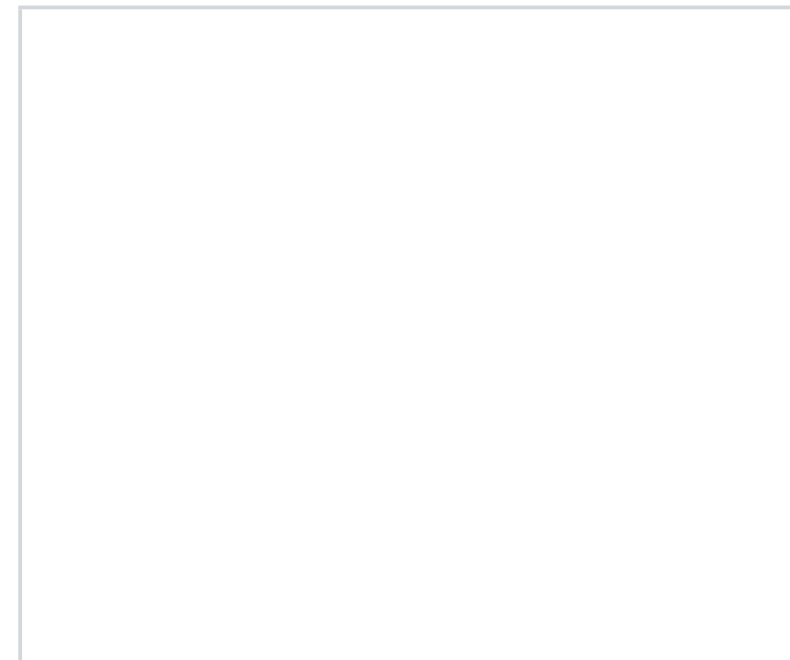
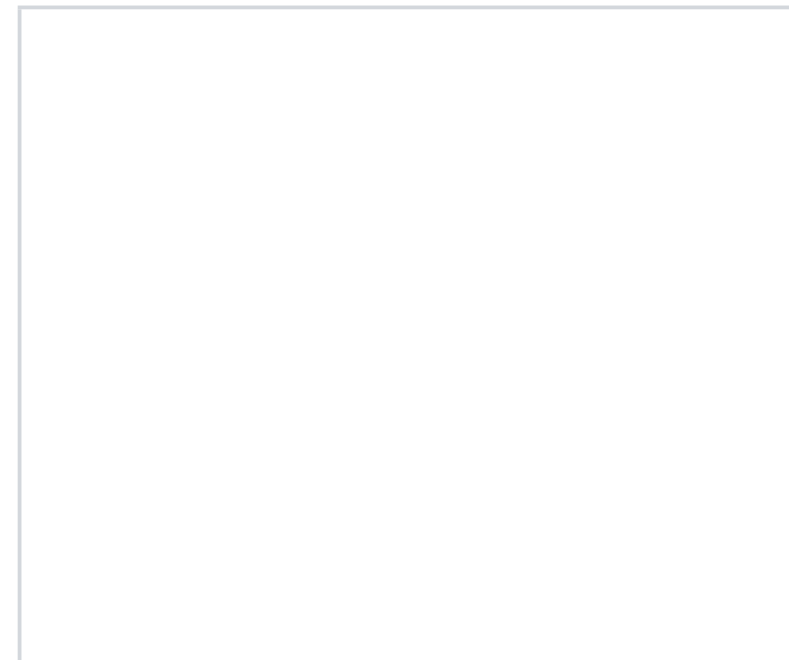
Bollards



Poles



Poles



From where does luminaire originate?



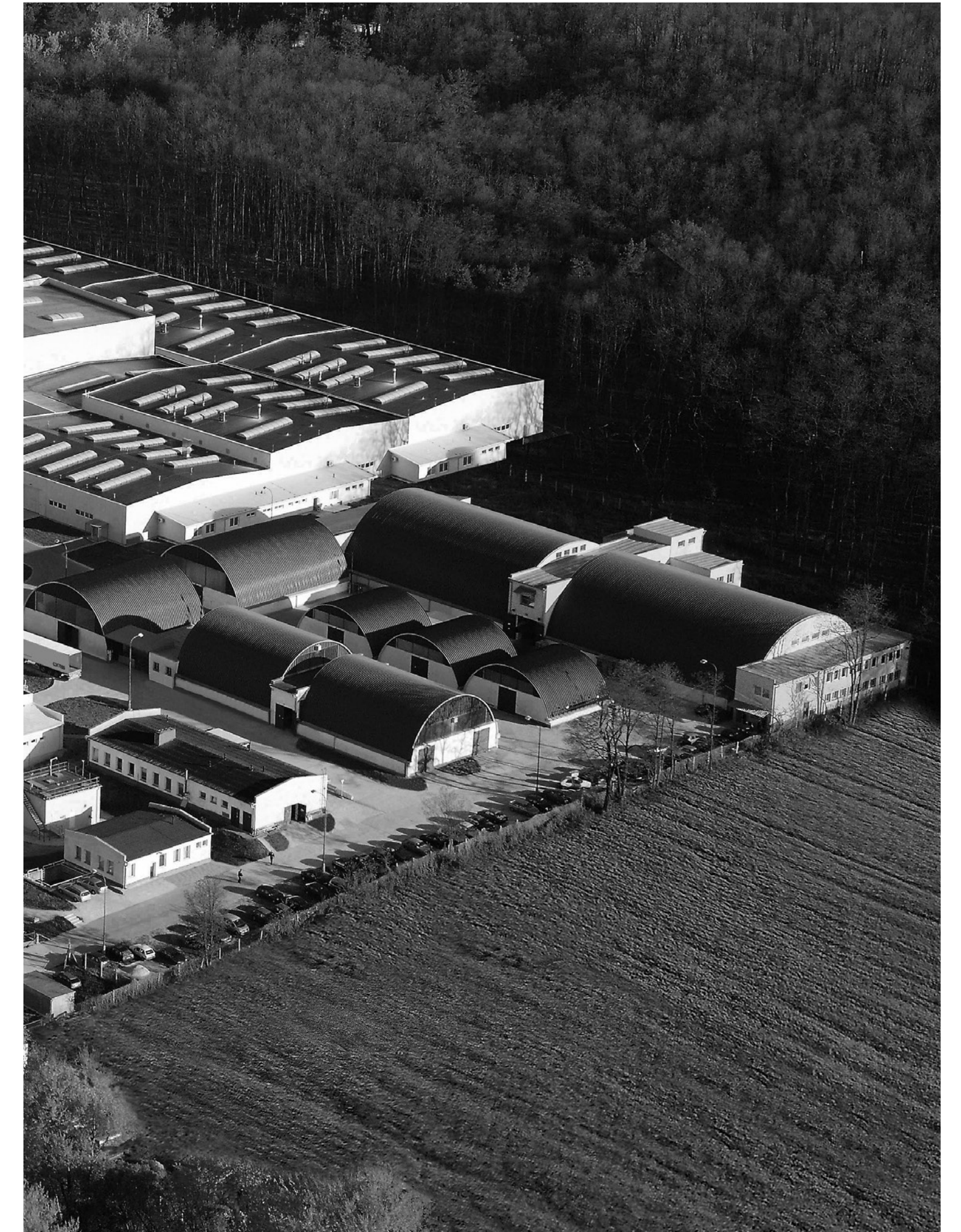


OMS Lighting is a part of the OMS company group, a leading European manufacturer of professional luminaires and lighting systems.

We have a global presence for the last 30 years, serving customers across Europe and beyond.

We collaborate with architects, lighting designers, and project managers to deliver tailored lighting solutions for various projects.

OMS Lighting is recognized for its quality lighting products, innovative designs, and commitment to sustainability in the lighting industry.



We are your partner

Thanks to verified supply chain partners from Europe and selected partners, we can ensure quality and efficient logistics.

Our focus extends beyond just speed, though. Newly implemented logistics processes and factory digitization make us a reliable and sustainable partner. These advancements minimize waste and maximize efficiency, benefiting both you and the environment.



Customer satisfaction

Our commitment goes beyond just a reliable and sustainable supply chain. Our goal is to deliver competitive solutions that align with market standards. We understand the importance of value, so we strive for the perfect balance between quality and price.

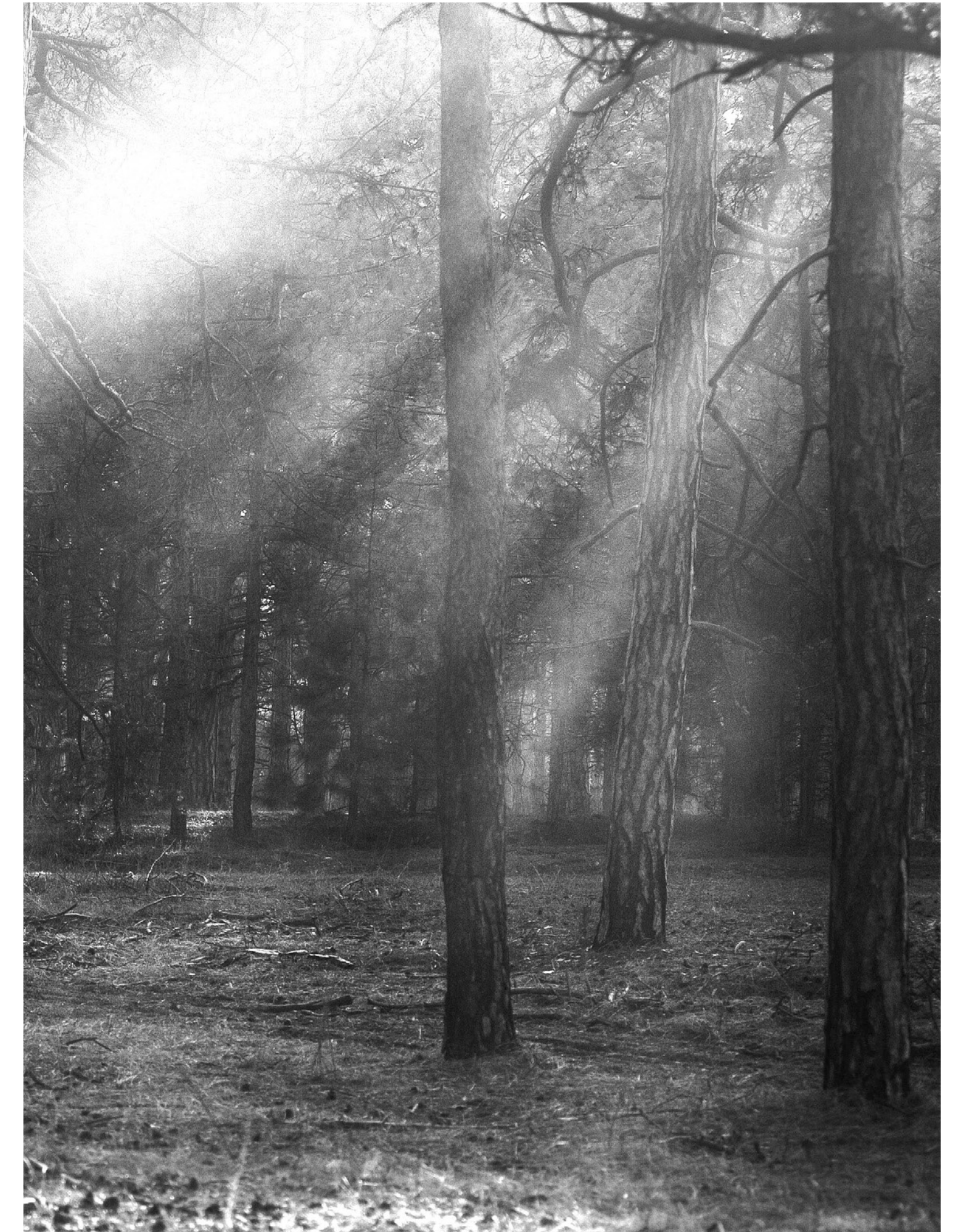
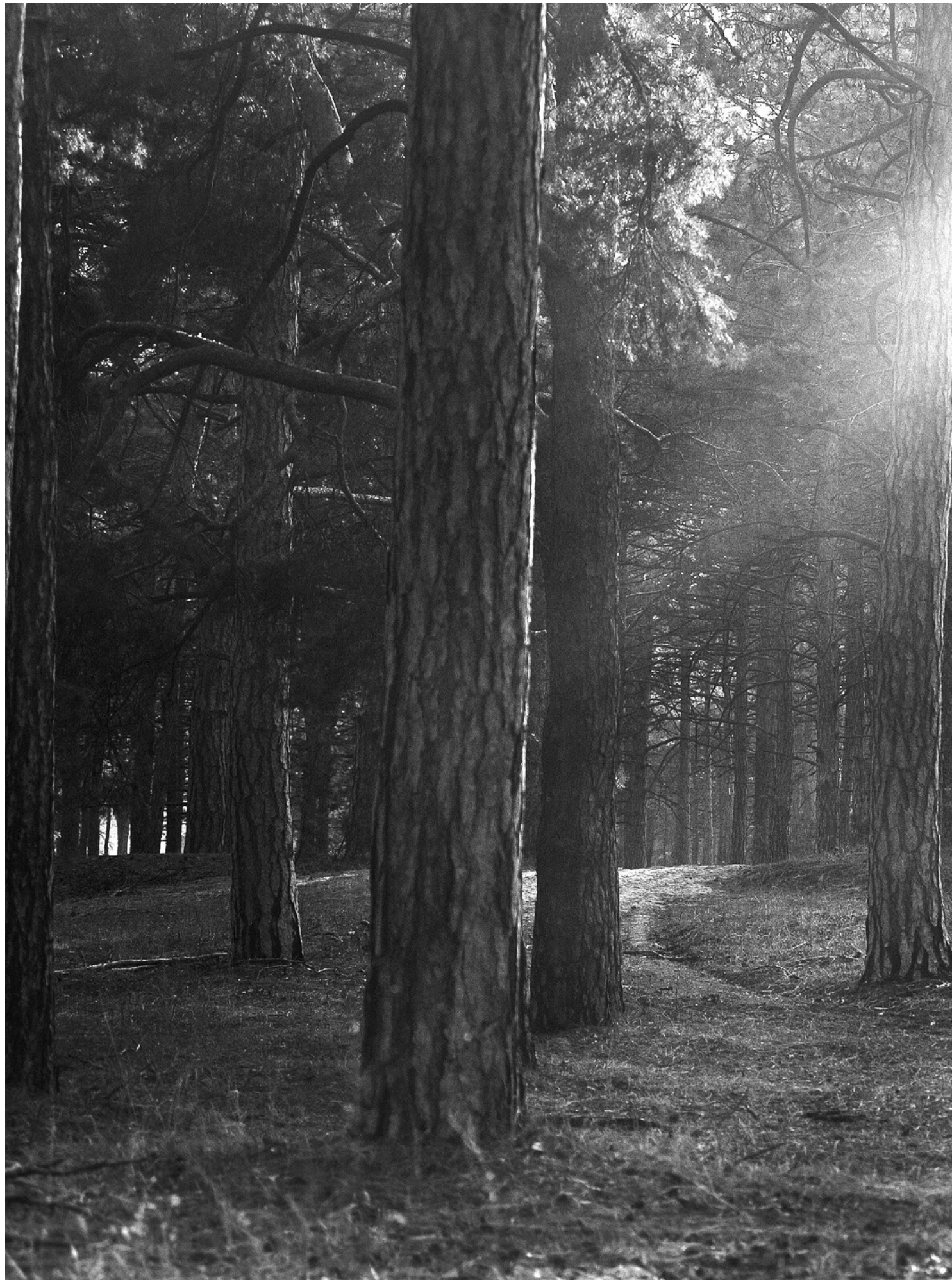
We prioritize exceptional service, and building close personal relationships with our customers. Your satisfaction is our top priority. We're here to listen to your needs, answer your questions, and provide ongoing support – ensuring a truly positive experience.



We take full responsibility for our shared planet

We recognize that using sustainable environmental solutions is increasingly necessary in our time.

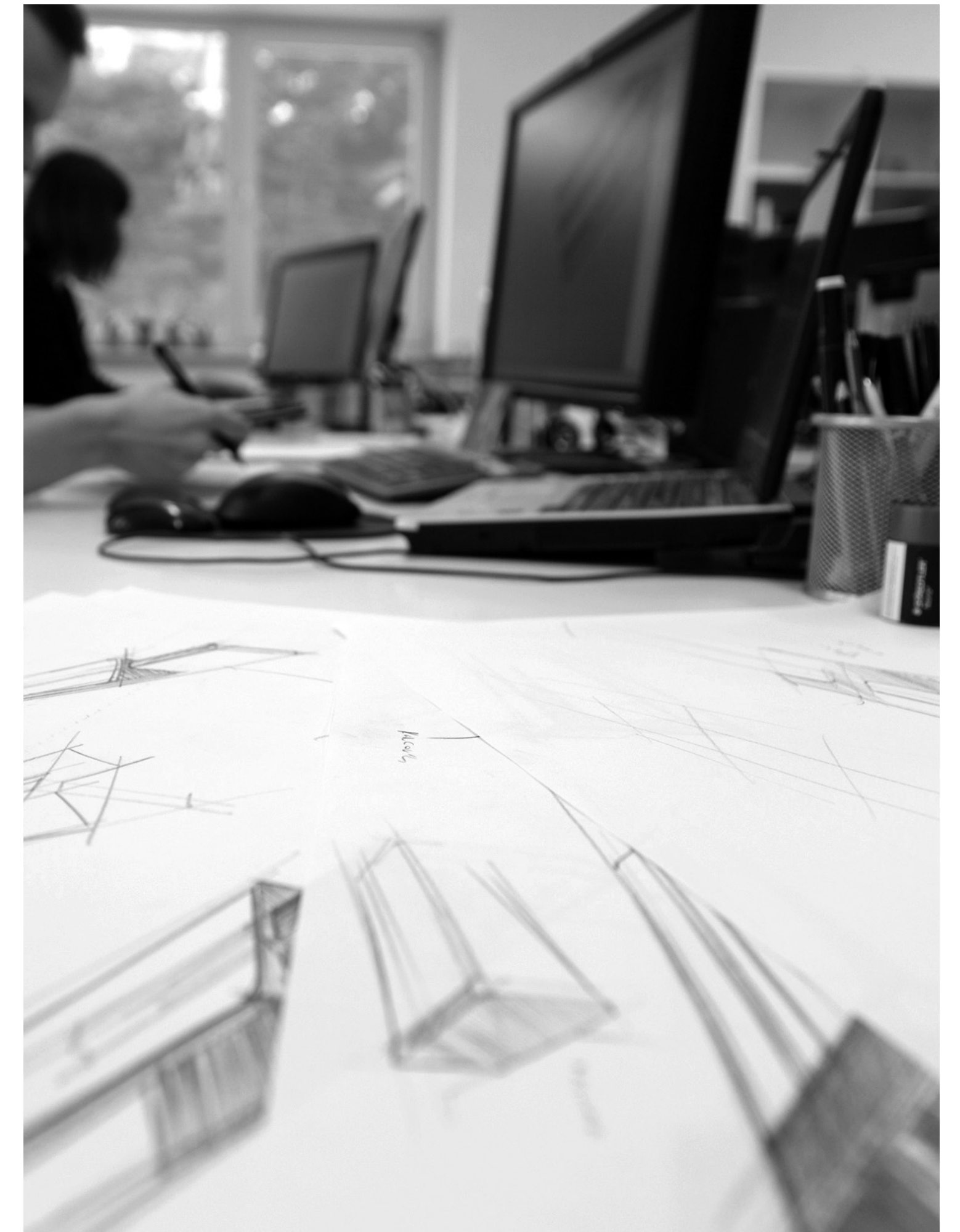
Therefore, we are committed to minimizing our impact on the planet by selecting materials and components that can be recycled and reused. Our production plant is digitized, enabling us to manage waste effectively, monitor water quality, and significantly reduce energy consumption through an energy management system. Additionally, we are developing energy harvesting projects, and our company will soon be powered by solar panels.



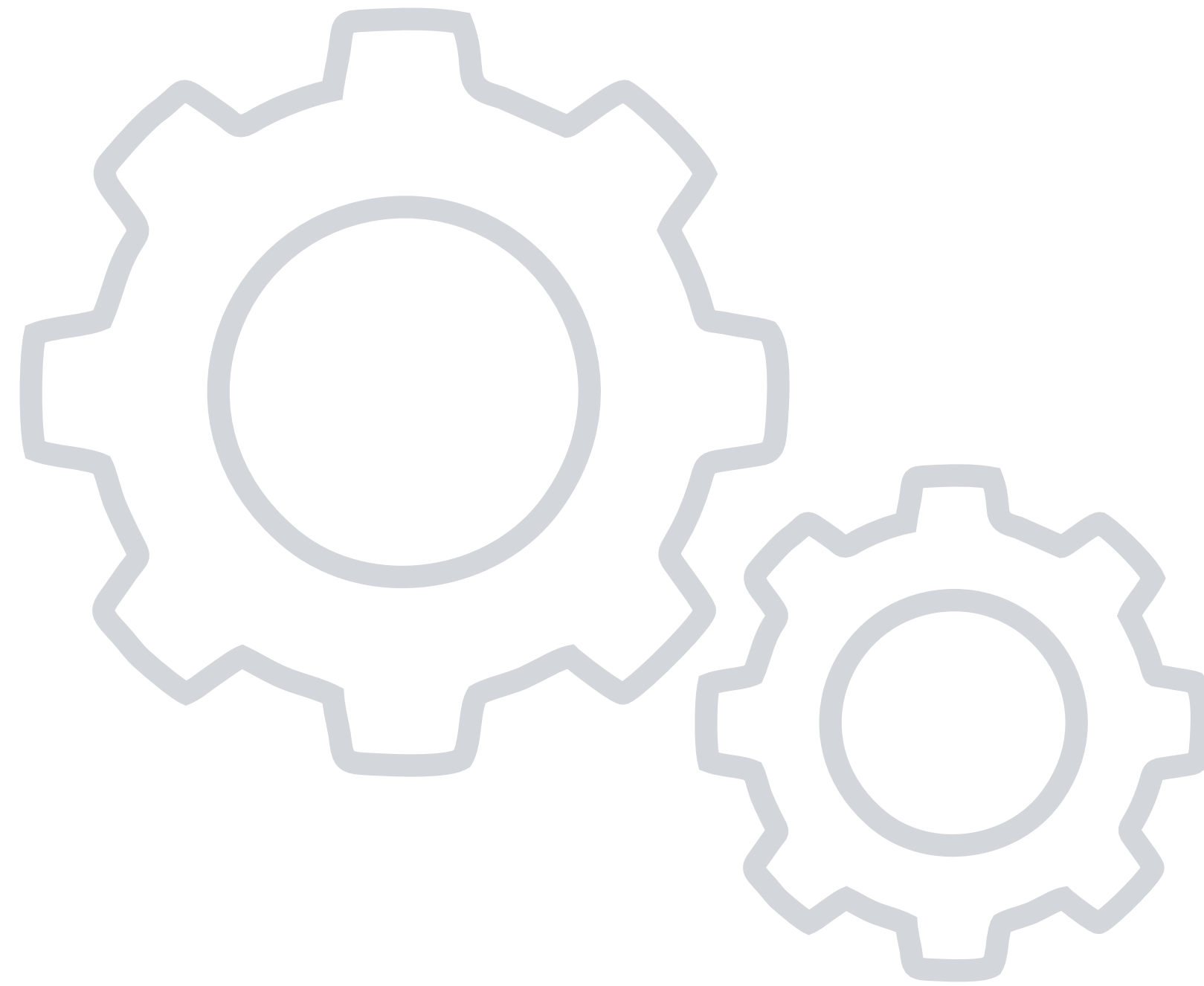


We take pleasure in sharing our know-how with you, our partners

This dedication to sustainability is just the beginning. We're passionate about pushing the boundaries of light. Through an innovative approach, we collaborate with our R&D experts who utilize one of Europe's largest and most advanced lighting labs. Together, they bring forth groundbreaking technologies that redefine what's possible. But our passion doesn't stop at creation – we're delighted to share this knowledge with you. This transparency allows you to be a part of the journey.



Technical info



Quality LEDs bring better light

Technological advancements bring highly efficient LEDs (lm/w) that maintain or enhance light quality.

OMS lighting prioritizes this, offering a curated selection with a minimum CRI of 90 for vibrant colors. Choose from standard options (2700K, 3000K, 4000K) or customize color temperature for specific needs.

For peak performance, we integrate the newest technology, pushing the boundaries of LED lighting.





Energy saving

Two key factors impact energy savings: Lighting Design - this involves selecting the right light fixtures and positioning them strategically throughout the space.

Light Management System (LMS) - this is arguably the biggest energy saver. It regulates lighting through automatic controls, and scene settings. Additionally, individual systems can be linked for further efficiency.

Compared to a simple on/off system, a well-designed LMS can reduce energy consumption by up to 80%. Less energy use means lower costs, but it also reduces CO² emissions.



Smart urban lighting

Public lighting grids are transforming thanks to IoT. Cities are creating smart lighting systems by connecting lamp posts to sensors and a central network. These systems automatically adjust light levels based on time of day, weather, and pedestrian presence. This cuts energy costs by dimming lights in unoccupied areas, reduces light pollution, and creates a safer, more adaptable environment.

Furthermore, the data collected by these sensors can be used for other purposes, like identifying areas with high foot traffic or malfunctions.



Ground Recessed



HARM



HARM

Harm luminaires are designed for outdoor applications, combining durability, elegance, and creative design to seamlessly blend with the environment. They are versatile, resistant to ground installation with IP67 protection, or can also be mounted into a wall with IP66 protection. Harm luminaires offer six different designs and eight light distribution patterns, providing unrivaled flexibility for lighting urban spaces. Its IK08 impact resistance ensures durability in demanding environments. HARM is the ideal solution for architects who create striking and functional lighting concepts.

HARM D1



HARM D4



HARM D2



HARM D5



HARM D3



HARM D6



• Dimensions (L x W x H)

D1 ø 80 x 90 mm
D2-6 ø 80 x 103 mm

- Net Lumen Output (at Ta=25°C) D1 330 lm , 294 lm, 93 lm, D2 86 lm, D3 33 lm, D4 21 lm, D5 42 lm, D6 43 lm
- Power Consumption 5 W
- System Efficacy 4-66 lm/W
- Chromacity 3-step MacAdam
- Colour rendering index > 80
- Colour temperature 3000 K, on request 2200 K, 2700 K, 4000 K, RGBW
- Wiring FIX, on request dimmable
- Optical System Lenses (D1), Diffuser (D1-6)
- Beam Angle D1 spot 12°, medium 30°, diffuse 90°
D2 360°
D3 single 180°
D4 single 120°
D5 double 120°
D6 quadruple
- Materials Housing: Extruded aluminium
Diffuser: Extra clear or frosted tempered glass 8 mm (D1), opal polycarbonate (D2-6)
- Surface Finish Polyester powder paint
- Service Lifetime (Ta 40°C) 60,000 hours/L80/B15

220-240V 50-60Hz
LED
CHROMATICITY 3 SDCM
CRI 80+ Ra
CCT 3000 K
ECG
IP 67
IK 08
IP 66
wall recessed installation

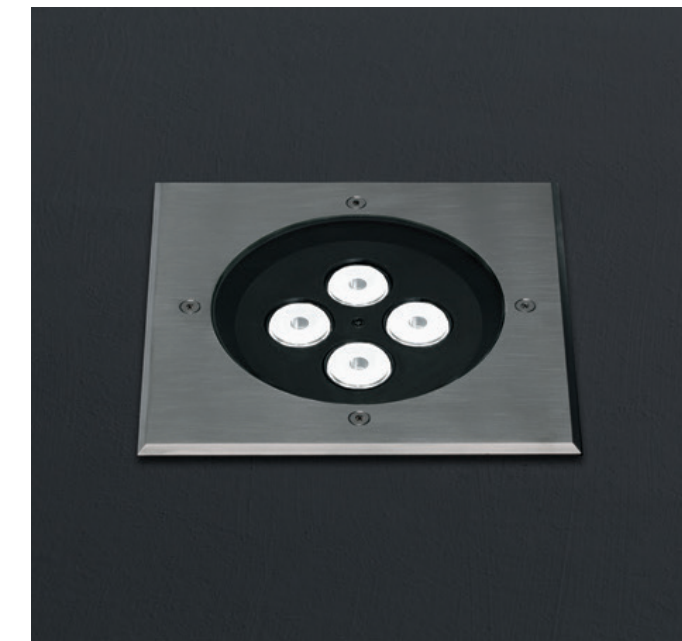
GOVEN

The Goven luminaire is a sleek and functional outdoor lighting solution crafted from die-cast aluminum and tempered 12mm glass. Its elegant, stainless steel frame is available in both circular and square designs, seamlessly blending into various outdoor environments.

The Goven is ideal for illuminating driveways, pathways, bike lanes, and more, withstands vehicles up to 2000 kg driving at a maximum of 20 km/h. With four distinct light distribution patterns, it offers flexibility for different spaces. Its minimalist design ensures that the light is focused where it is needed, guiding your way safely.



CIRCLE M



SQUARE M



CIRCLE L

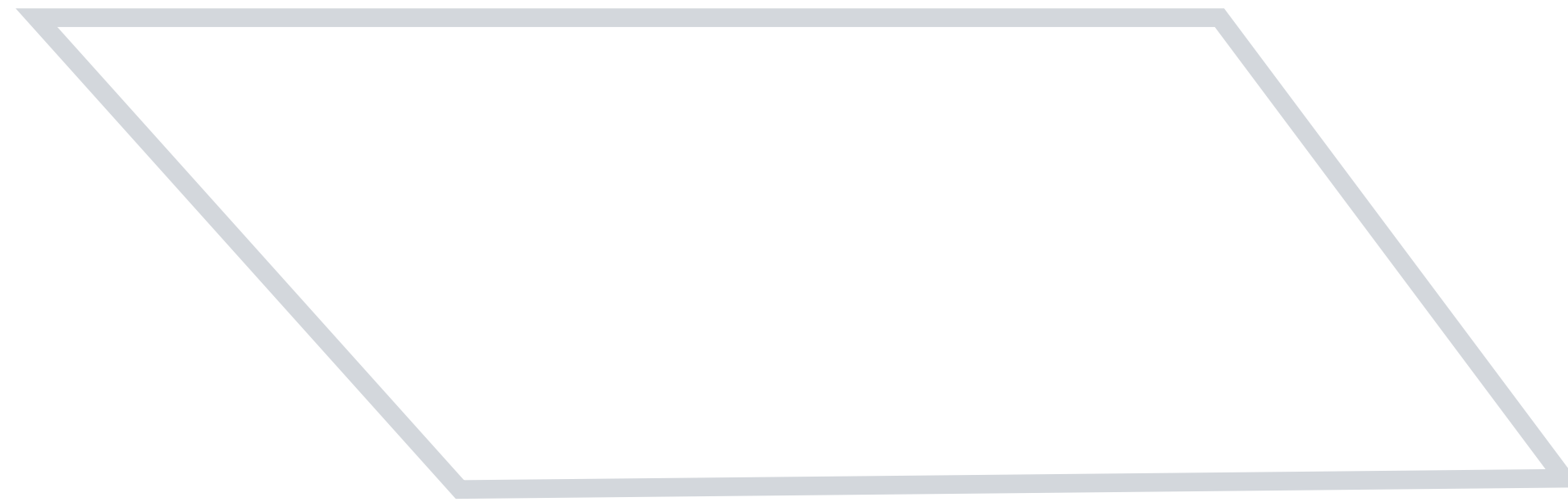


SQUARE L



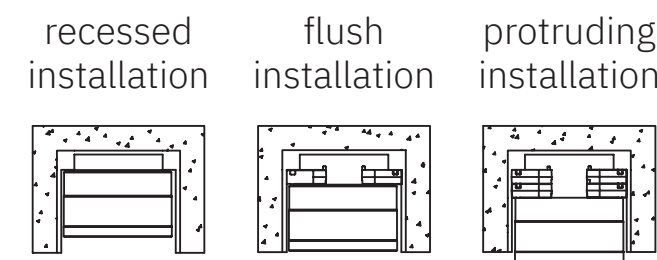
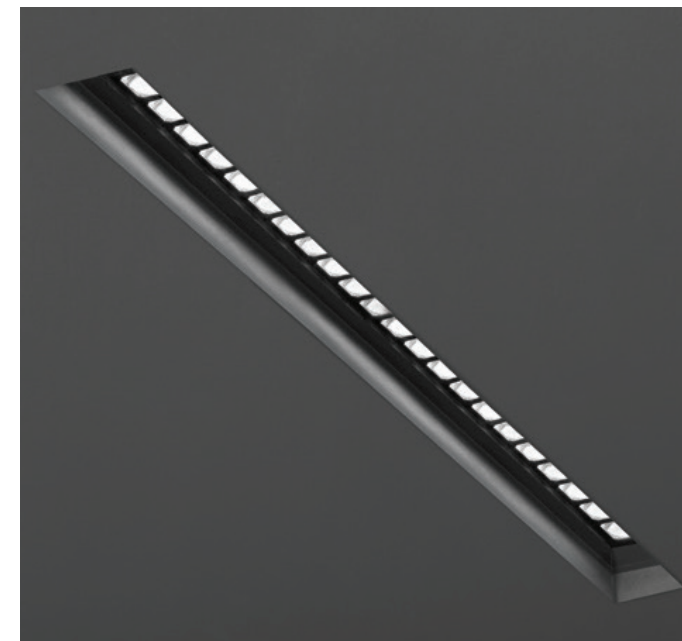
- Net Lumen Output (at Ta=25°C) M 864 lm, 673 lm, 656 lm, 623 lm, L 1569 lm, 1465 lm, 1534 lm, 1534 lm
- Power Consumption M 11 W, L 23 W
- System Efficacy 57-79 lm/W
- Chromacity 3-step MacAdam
- Colour rendering index > 90
- Colour temperature 3000 K, on request 2200 K, 2700 K, 4000 K, RGBW
- Wiring FIX, on request dimmable
- Optical System Lenses
- Beam Angle spot 11°
medium 30°
wide flood 60°
asymmetric 70° x β40°
- Materials Housing: Die-cast aluminium
Cover: Extra clear tempered glass 12 mm
- Surface Finish Polyester powder paint
- Service Lifetime (Ta 40°C) 60,000 hours/L80/B15
- Dimmensions (L x W x H) CIRCLE M ø 175 x 59 mm
SQUARE M 175 x 175 x 59 mm
CIRCLE L ø 234 x 150 mm
SQUARE L 234 x 175 x 150 mm

Recessed



CELESTIALLO

Celestiallo is a versatile outdoor luminaire designed for recessed ceiling installation. Offering five distinct optical beams – spot, medium, flood, elliptic, and grazing – it caters to diverse lighting needs. This innovative fixture comes in four sizes, ranging from compact S (130mm) to expansive XL (900mm), ensuring suitability for various spaces. With options for recessed, flush, or protruding mounting, Celestiallo provides maximum flexibility. Its IP67 rating guarantees protection against water ingress, while the IK10 rating ensures resistance to impacts, making it ideal for outdoor environments.



S



M



L



XL



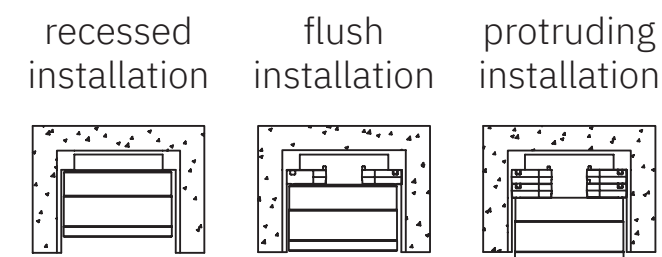
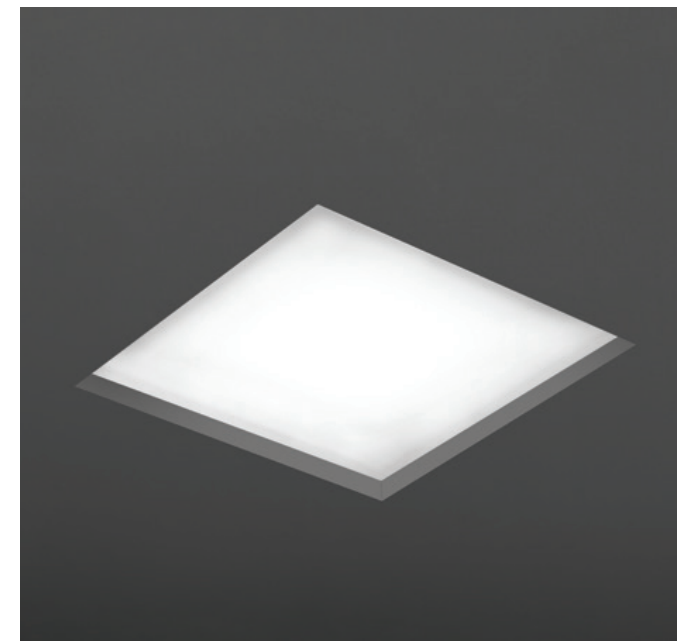
- Net Lumen Output (at Ta=25°C)
 - S 610 lm, 589 lm, 490 lm, 592 lm, 515 lm
 - M 1741 lm, 1783 lm, 1657 lm, 1896 lm, 1718 lm
 - L 3638 lm, 3566 lm, 3314 lm, 3792 lm, 3436 lm
 - XL 4693 lm, 4660 lm, 4275 lm, 4892 lm, 4432 lm
- Power Consumption
 - S 8 W, M 24 W, L 43 W, XL 60 W
- System Efficacy
 - 61-88 lm/W
- Chromacity
 - 3-step MacAdam
- Colour rendering index
 - > 90
- Colour temperature
 - 3000 K, on request 2200 K, 2700 K, 4000 K, RGBW
- Wiring
 - FIX, on request dimmable
- Optical System
 - Lenses
- Beam Angle
 - spot 12°
 - medium 30°,
 - flood 45°
 - elliptic 25° x 60°
 - wgrazing 25° x 60° x β10°
- Materials
 - Housing: Extruded aluminium
 - Cover: Extra clear glass
- Surface Finish
 - Polyester powder paint

- Service Lifetime (Ta 40°C)
 - 60,000 hours/L80/B15
- Dimensions (L x W x H)
 - S 135 x 110 x 95 mm
 - M 330 x 110 x 95 mm
 - L 612 x 110 x 95 mm
 - XL 895 x 110 x 95 mm



AURA ASTRAL

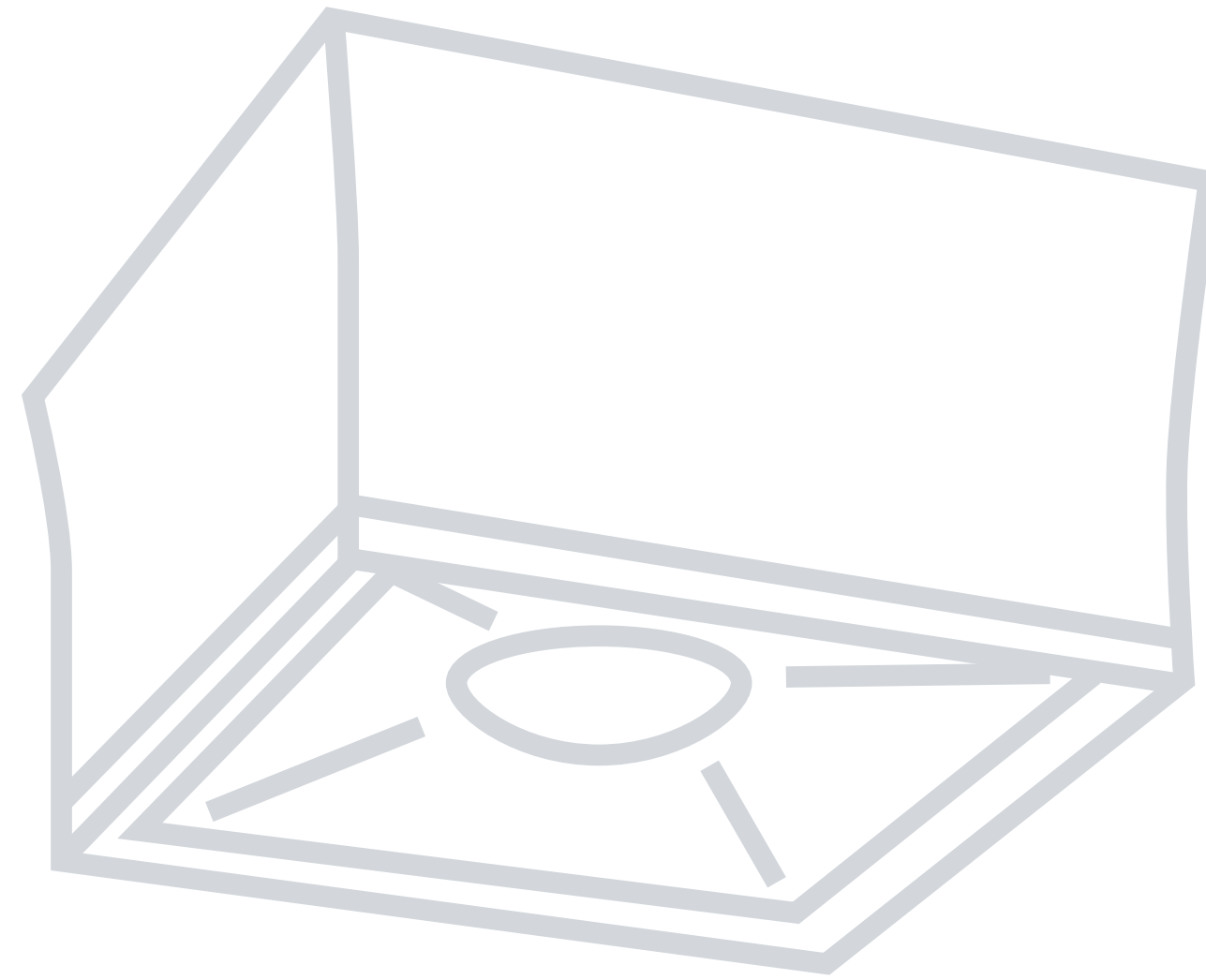
Aura Astral is a square versatile outdoor luminaire designed for recessed ceiling or recessed into-wall installation. With options for recessed, flush, or protruding mounting, Aura Astral provides maximum flexibility. The optical component, an opal glass diffuser, emits a soft, even glow. Its classic form conceals advanced engineering, delivering both exceptional performance and visual appeal. Its IP67 rating guarantees protection against water ingress, while the IK10 rating ensures resistance to impacts, making it ideal for outdoor environments.



- Net Lumen Output (at Ta=25°C) M 490 lm
L 942 lm,
- Power Consumption M 12 W
L 27 W
- System Efficacy 35-41 lm/W
- Chromacity 3-step MacAdam
- Colour rendering index > 90
- Colour temperature 3000 K, on request 2200 K, 2700 K, 4000 K, RGBW
- Wiring FIX, on request dimmable
- Optical System Diffuser
- Beam Angle 120°
- Materials Housing: Die-cast aluminium
Diffuser: Opal glass
- Surface Finish Polyester powder paint
- Service Lifetime (Ta 40°C) 60,000 hours/L80/B15
- Dimmensions (L x W x H) M 210 x 210 x 90 mm
L 285 x 285 x 90 mm



Surfaced



SIRIUS SKY

Sirius Sky is a compact, round-shaped outdoor ceiling luminaire encased in durable aluminum.

Its sleek design seamlessly integrates into modern outdoor spaces.

Delivering high lighting efficiency and precise luminance control, Sirius Sky eliminates shadows, creating a perfect outdoor atmosphere.

Available in two sizes with adjustable beam patterns – spot, flood, and wide flood – this luminaire offers versatile lighting solutions.

With its IP67 and IK10 ratings, Sirius Sky ensures long-lasting performance in any outdoor environment.



- Net Lumen Output (at Ta=25°C) M 785 lm, 950 lm, 1200 lm
L 916 lm, 1400 lm, 1650 lm
- Power Consumption M 15 W, L 24 W
- System Efficacy 38-80 lm/W
- Chromacity 3-step MacAdam
- Colour rendering index > 90
- Colour temperature 3000 K, on request 2200 K, 2700 K, 4000 K, RGBW
- Wiring FIX, on request dimmable
- Optical System Lenses + diffuser
- Beam Angle spot 20°
flood 40°
wide flood 60°
- Materials Housing: Die-cast aluminium
Diffuser: Extra clear glass
- Surface Finish Polyester powder paint
- Service Lifetime (Ta 40°C) 60,000 hours/L80/B15
- Dimmensions (L x W x H) M ø 125 x 77 mm
L ø 215 x 123 mm

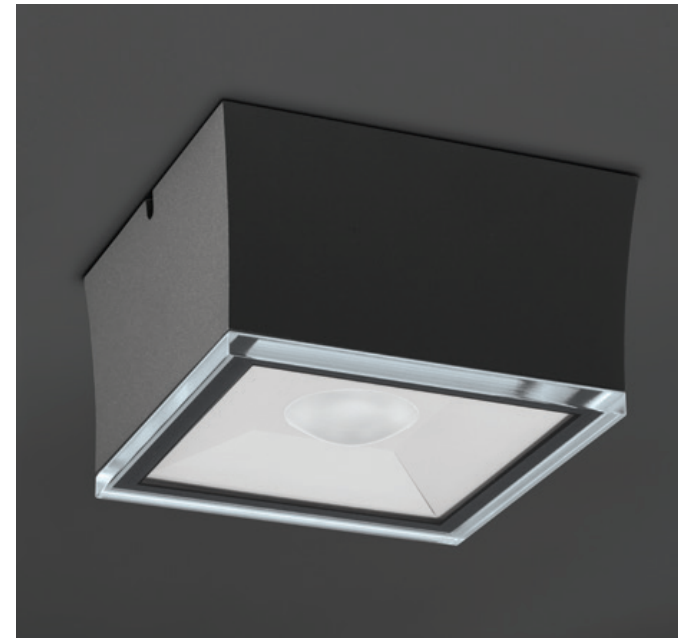


ZODIACO

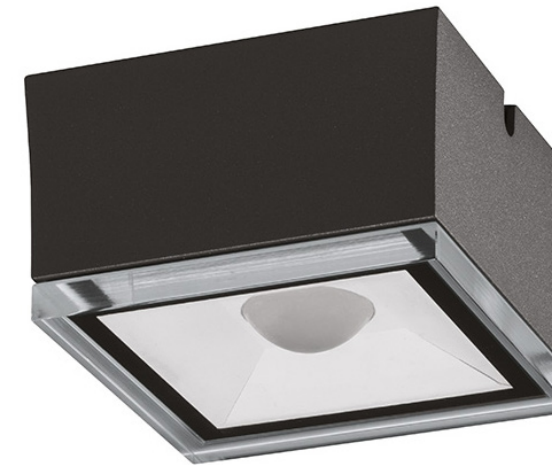
Zodiaco is a compact, square-shaped outdoor ceiling luminaire encased in durable aluminum.

Its sleek design seamlessly integrates into modern outdoor spaces. Delivering high lighting efficiency and precise luminance control, Zodiaco eliminates shadows, creating a perfect outdoor atmosphere.

Available in two sizes with adjustable beam patterns – spot, flood, and wide flood – this luminaire offers versatile lighting solutions. With its IP67 and IK10 ratings, Zodiaco ensures long-lasting performance in any outdoor environment.



M



L



- Net Lumen Output (at Ta=25°C) M 868 lm, 1218 lm, 1350 lm
L 839 lm, 1183 lm, 1430 lm
- Power Consumption M 15 W, L 21 W
- System Efficacy 40-90 lm/W
- Chromacity 3-step MacAdam
- Colour rendering index > 90
- Colour temperature 3000 K, on request 2200 K, 2700 K, 4000 K, RGBW
- Wiring FIX, on request dimmable
- Optical System Lenses + diffuser
- Beam Angle spot 25°
flood 50°
wide flood 70°
- Materials Housing: Die-cast aluminium
Diffuser: Extra clear glass
- Surface Finish Polyester powder paint
- Service Lifetime (Ta 40°C) 60,000 hours/L80/B15
- Dimmensions (L x W x H) M 125 x 125 x 77 mm
L 200 x 200 x 123 mm



Projectors



RADIANCON

Radiancon is a luminaire that reimagines outdoor illumination. Its unique construction houses a powerful projector capable of delivering five distinct light beams: spot, medium, flood, grazing, and diffuse. This architectural luminaire offers unparalleled flexibility, with the ability to rotate 120° horizontally and 90° vertically. Whether illuminating a grand façade or creating subtle ground effects, adapts effortlessly. Its versatile installation options - ceiling, wall, floor, or ground-mounted - ensure a perfect fit for any outdoor environment. Experience the potential of Radiancon and transform your space.



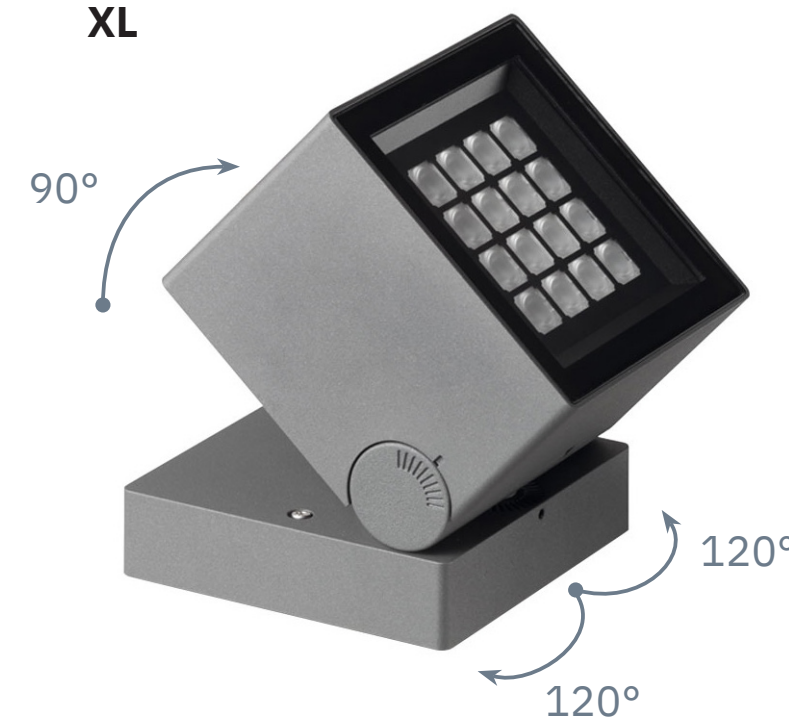
M



L



XL



- Net Lumen Output (at Ta=25°C)
 - M 643 lm, 590 lm, 576 lm, 503 lm, 353 lm
 - L 1423 lm, 1332 lm, 1307 lm, 1211 lm, 882 lm
 - XL 2506 lm, 2333lm, 2342 lm, 2134 lm, 1480 lm
- Power Consumption
 - M 6 W, L 14W, XL 24 W
- System Efficacy
 - 59-107 lm/W
- Chromacity
 - 3-step MacAdam
- Colour rendering index
 - > 90
- Colour temperature
 - 3000 K, on request 2200 K, 2700 K, 4000 K, RGBW
- Wiring
 - FIX, on request dimmable
- Optical System
 - Lenses + diffuser or diffuser
- Beam Angle
 - spot 14°, medium 30°, flood 45°, grazing 25° x 60° x 110°
 - diffuse 120°
- Materials
 - Housing: Die-cast aluminium
 - Diffuser: Transparent glass or opal glass (diffuse version)
- Service Lifetime (Ta 40°C)
 - 60,000 hours/L80/B15
- Dimmensions (L x W x H)
 - M 90 x 90 x 90 mm
 - L 120 x 120 x 120 mm
 - XL 160 x 160 x 160 mm

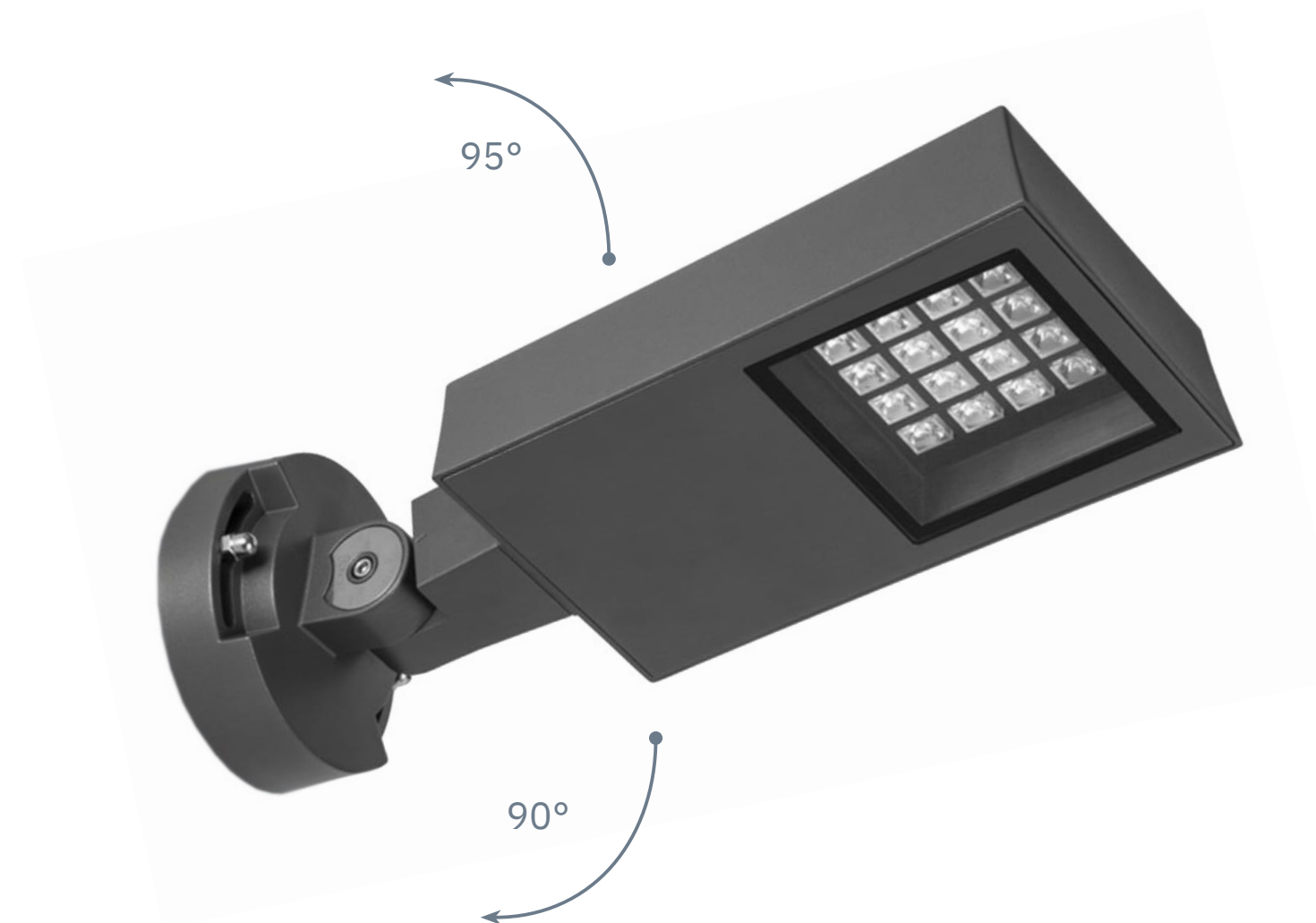
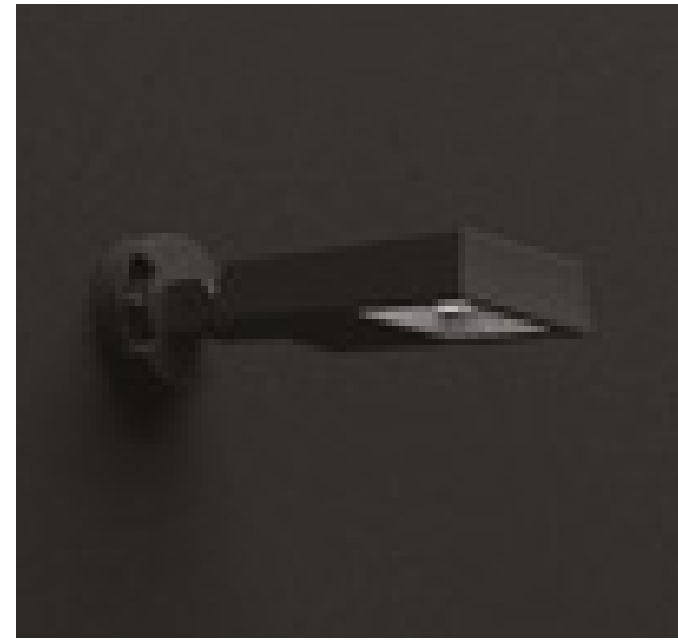
220-240V
50-60Hz
LED
CHROMATICITY
3
SDCM
CRI
90+
Ra
CCT
3000
K
ECG
⊥
IP
67
IK
08

STELARIS PROJECTOR

The Stelaris Projector is a highly adaptable outdoor luminaire designed to illuminate urban spaces.

Powerful, ultra-durable, versatile. With a flexible +90°/-95° articulation, it can be positioned for optimal light distribution in wall, ceiling, or ground applications.

IP66 and IK08 ratings ensure durability and resistance to environmental factors. Available in three gray finishes, it offers powerful, ultra-performance optics for both vehicular and pedestrian areas. Choose from projector or pole-mounted versions to suit your specific lighting needs.



- Net Lumen Output (at Ta=25°C) 2770 lm, 3490 lm, 3362 lm, 3362 lm, 3330 lm, 3362 lm, 2720 lm
- Power Consumption 27 W
- System Efficacy 103-125 lm/W
- Chromacity 3-step MacAdam
- Colour rendering index > 80
- Colour temperature 3000 K, on request 2200 K, 2700 K, 4000K, RGBW
- Wiring FIX, on request dimmable
- Optical System Lenses
- Beam Angle (C0-180, C90-270)
 - elliptic 20° x 50°
 - medium 30°
 - parking 150° x 85°
 - pedestrian/cycle 125° x 45°
 - spot 15°
 - street 125° x 45°
 - wide flood 70°
- Materials
 - Housing: Die-cast aluminium
 - Diffuser: Extra clear glass
- Surface Finish Polyester powder paint
- Service Lifetime (Ta 40°C) 60,000 hours/L80/B15
- Dimmensions (L x W x H) 452 x 200 x 126 mm

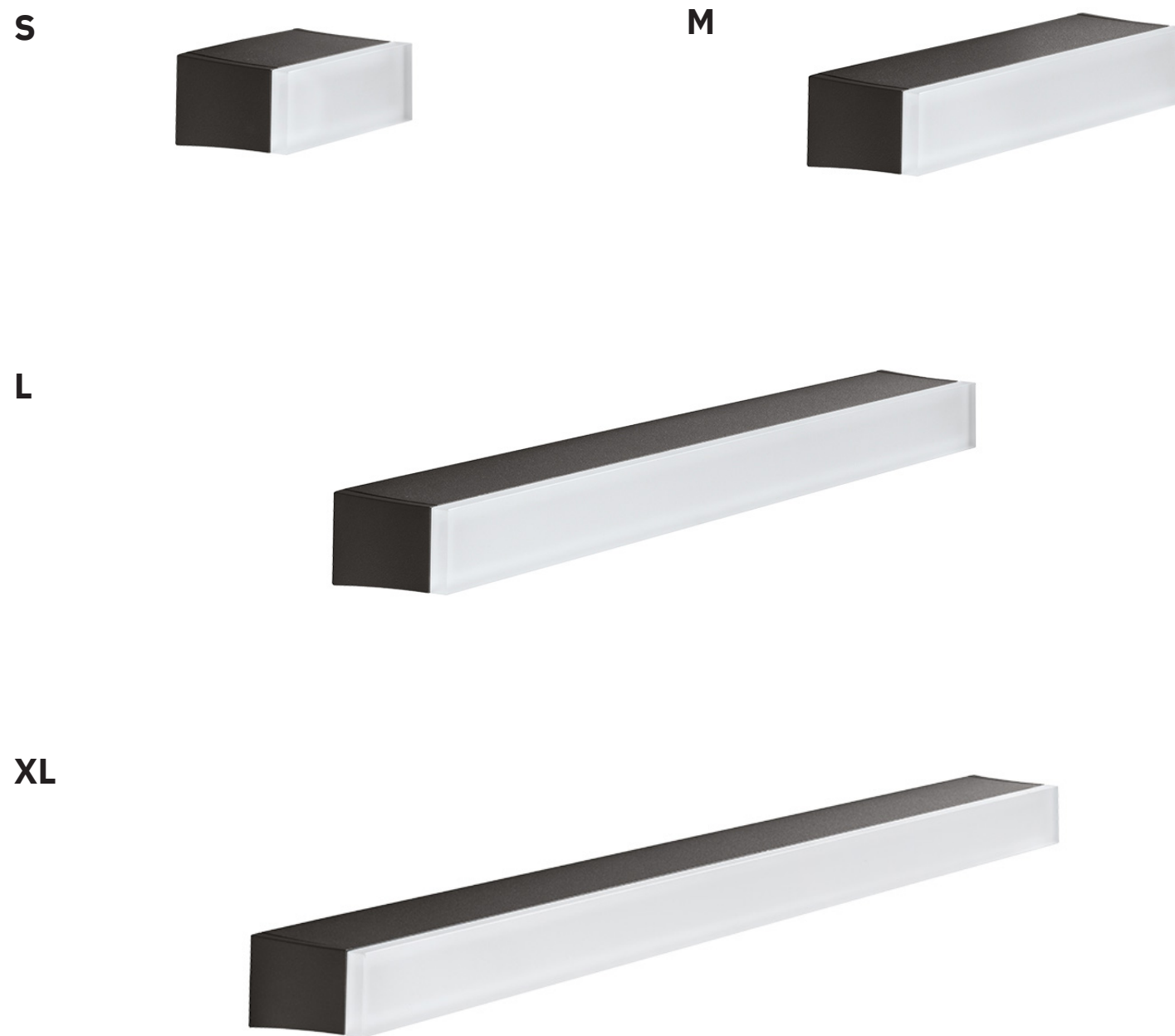
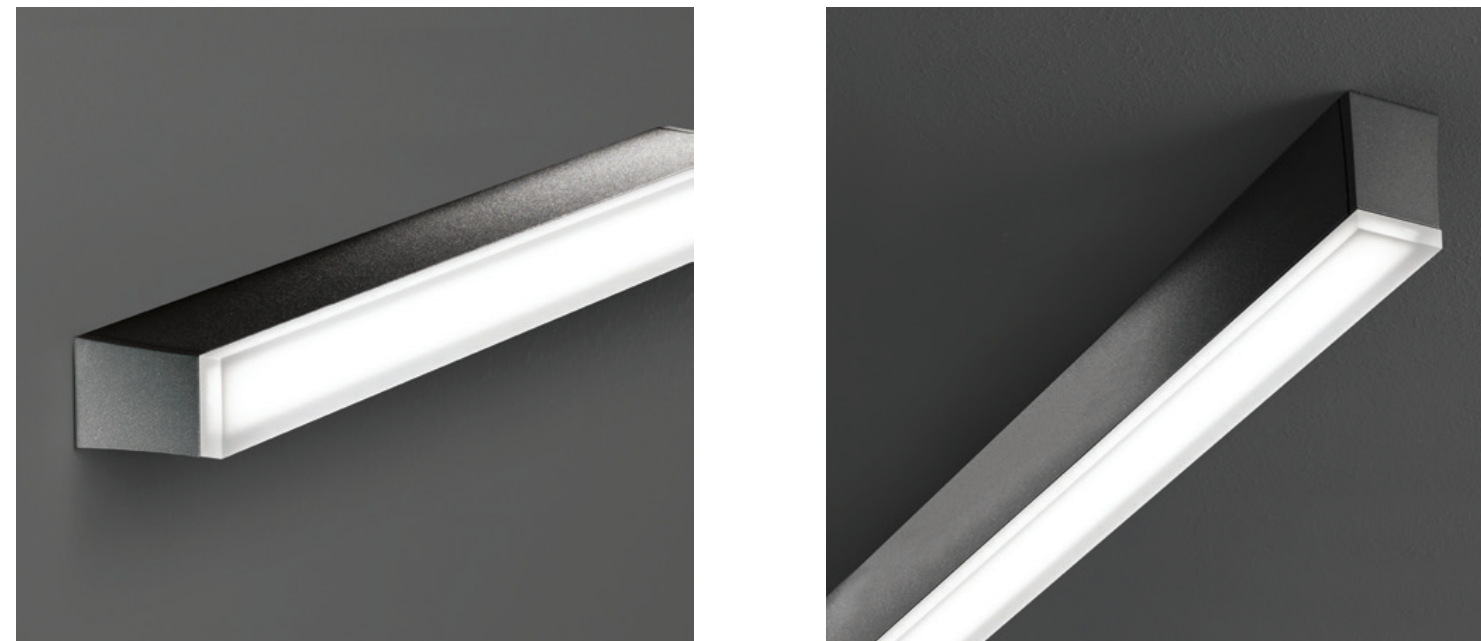
220-240V
50-60Hz
LED
CHROMATICITY
3
SDCM
CRI
80+
Ra
CCT
3000
K
ECG
IP
66
IK
08

Wall



LUNALUX

Lunalux is a minimalist luminaire designed for outdoor use. It can be mounted on walls or ceilings, which offers versatile installation options. Blending timeless aesthetics with cutting-edge technology, this luminaire is a testament to rigorous research and development. Its classic form conceals advanced engineering, delivering both exceptional performance and visual appeal. The optical component, an opal glass diffuser, emits a soft, even glow. Engineered for durability, the luminaire boasts IP67 weather resistance and IK10 impact protection, ensuring long-lasting performance in outdoor environments.



- Net Lumen Output (at Ta=25°C) S 115 lm, M 510 lm, L 1020 lm, XL 1294 lm
- Power Consumption S 4 W, M 16 W, L 30 W, XL 38 W
- System Efficacy 29-34 lm/W
- Chromacity 3-step MacAdam
- Colour rendering index > 90
- Colour temperature 3000 K, on request 2200 K, 2700 K, 4000 K, RGBW
- Wiring FIX
on request dimmable (M, L, XL)
- Optical System Diffuser
- Beam Angle 120°
- Materials Housing: Extruded aluminium
Diffuser: Opal glass
- Surface Finish Polyester powder paint
- Service Lifetime (Ta 40°C) 60,000 hours/L80/B15
- Dimmensions (L x W x H) S 130 x 47 x 77 mm
M 318 x 47 x 77 mm
L 600 x 47 x 77 mm
XL 882 x 47 x 77 mm

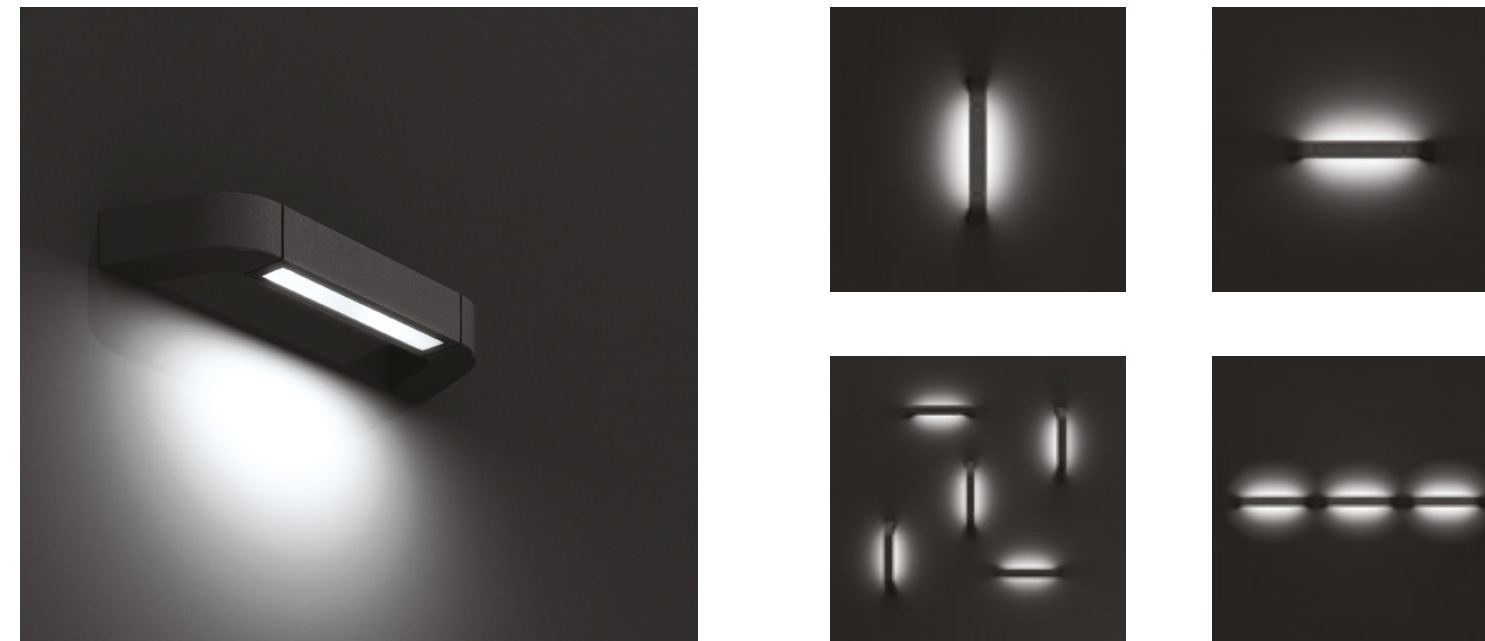


VISTAL

Vistal is more than just a luminaire; it's a versatile design element. With its ability to be mounted on walls or ceiling, this innovative luminaire offers endless possibilities for outdoor illumination.

From solitary accents to continuous lines, Vistal's modular design adapts to any space. Its unique feature is the rotatable central element, allowing for precise control of light direction and intensity.

With a range of beam angles from concentrated spot to wide flood, this luminaire caters to diverse lighting needs, transforming outdoor spaces into captivating environments.



- Net Lumen Output (at Ta=25°C) M 365 lm, 590 lm, 1180 lm, 1210 lm, 960 lm
L 565 lm, 1770 lm, 1830 lm, 1600 lm
- Power Consumption M 16 W, L 24W
- System Efficacy 23-76 lm/W
- Chromacity 3-step MacAdam
- Colour rendering index > 90
- Colour temperature 3000 K, on request 2200 K, 2700 K, 4000 K, RGBW
FIX, on request dimmable
- Wiring Lenses + diffuser
- Optical System diffuse 120°
elliptic 20° x 50°
medium 30°
spot 20°
wide flood 55°
- Beam Angle
- Materials Housing: Die-cast aluminium and extruded aluminium
Diffuser: Opal glass
- Surface Finish Polyester powder paint
- Service Lifetime (Ta 40°C) 60,000 hours/L80/B15
- Dimmensions (L x W x H) M 420 x 45 x 121 mm
L 520 x 45 x 121 mm

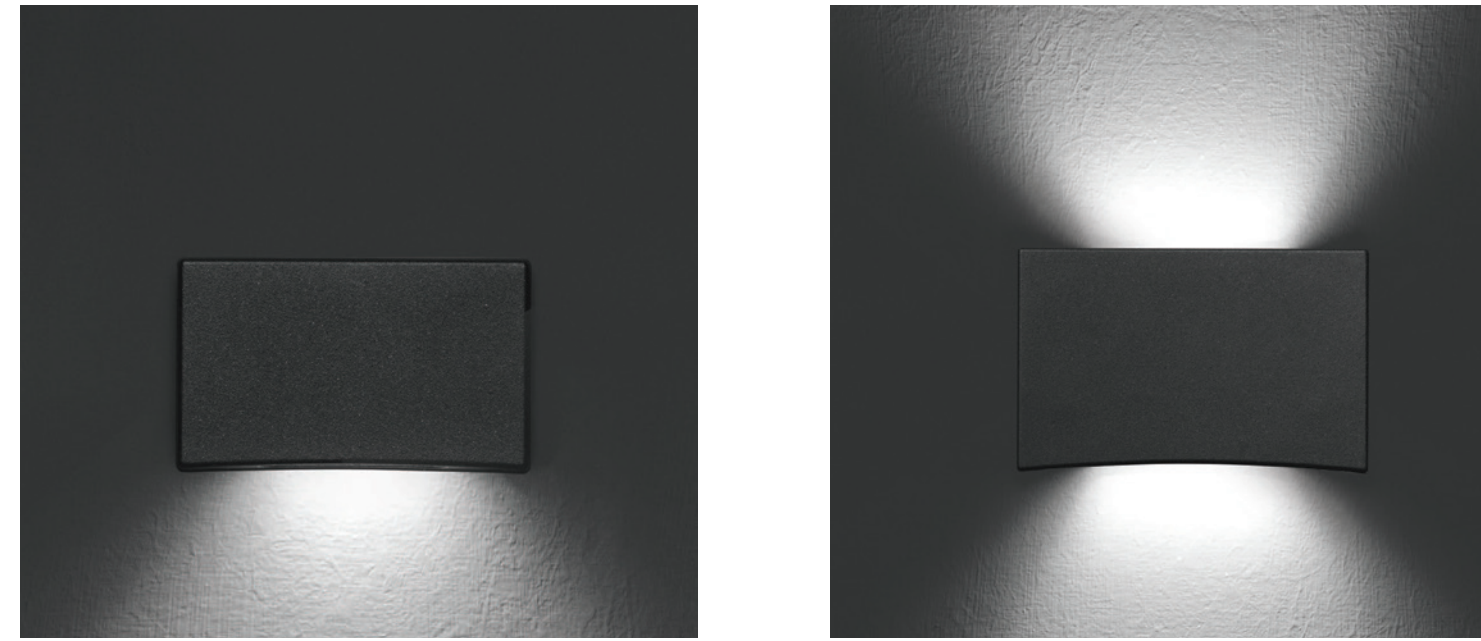


NOVA SKY

Nova Sky is a robust, contemporary wall luminaire that reimagines traditional lighting. Its compact, three-dimensional form contrasts linear designs.

The luminaire's core strength lies in its adaptable optics: spot, medium, wide flood, elliptic, asymmetric, double asymmetric, and double spot/asymmetric configurations cater to diverse lighting needs. The optical part consists of lenses shielded by clear glass.

It is engineered for durability with IP66 and IK08 ratings and delivers versatile lighting solutions for outdoor applications.



- Light Distribution: direct, direct-indirect
- Net Lumen Output (at Ta=25°C): D 609 lm, 589 lm, 491 lm, 592 lm, 266 lm, D-I 594 lm, 380 lm
- Power Consumption: 9 W, 10 W
- System Efficacy: 38-68 lm/W
- Chromacity: 3-step MacAdam
- Colour rendering index: > 90
- Colour temperature: 3000 K, on request 2200 K, 2700 K, 4000 K, RGBW
- Wiring: FIX, on request dimmable
- Optical System: Lenses
- Beam Angle: Direct: spot 20°, medium 30°, wide flood 55°, elliptic 20°x 50°, asymmetric, Direct-indirect: double spot 20° / asymmetric, double asymmetric
- Materials: Housing: Die-cast aluminium, Cover: Extra clear glass
- Surface Finish: Polyester powder paint
- Service Lifetime (Ta 40°C): 60,000 hours/L80/B15
- Dimmensions (L x W x H): 160 x 35 x 100 mm



POLARISTO

Polaristo is a versatile wall-mounted luminaire designed for outdoor environments. Its sleek, square form with softened corners offers a modern aesthetic.

The direct lighting distribution allows for a choice of two beam angles, the direct-indirect variant brings an additional combination of these two beam angles offering customized light spread.

Protected by a PMMA reflector cover, this luminaire is not only visually appealing but also durable and efficient, making it a clever and functional choice for outdoor lighting needs.



| | |
|---------------------------------|---|
| • Light Distribution | direct direct-indirect |
| • Net Lumen Output (at Ta=25°C) | D 15 lm, 26 lm, 128 lm, 250 lm D-I 30 lm, 256 lm, 143 lm |
| • Power Consumption | 6 W, 9 W |
| • System Efficacy | 3-28 lm/W |
| • Chromacity | 3-step MacAdam |
| • Colour rendering index | > 90 |
| • Colour temperature | 3000 K, on request 2200 K, 2700 K, 4000 K, RGBW |
| • Wiring | FIX, on request dimmable |
| • Optical System | Reflector |
| • Beam Angle | Direct: spot 10°, flood 45° Direct-indirect: double spot 10°, double wide flood 45°, wide flood 45° / spot 10° |
| • Materials | Housing: Die-cast aluminium Cover: Extra clear PMMA |
| • Surface Finish | Polyester powder paint |
| • Service Lifetime (Ta 40°C) | 60,000 hours/L80/B15 |
| • Dimmensions (L x W x H) | 124 x 90 x 124 mm |

| | | | | | | | | |
|---------------------|-----|---------------------------|------------------|------------------|-----|---|----------|----------|
| 220-240V 50-60Hz | LED | CHROMATICITY 3 SDCM | CRI 90+ Ra | CCT 3000 K | ECG | ⊕ | IP 65 | IK 08 |
|---------------------|-----|---------------------------|------------------|------------------|-----|---|----------|----------|

SOLTICE

The Soltice is a sophisticated outdoor wall-mounted luminaire designed to deliver exceptional light control. With three distinct reflector beam angles – 15°, 35°, and 60° – it offers unparalleled flexibility for various lighting applications.

This compact yet robust fixture boasts a solid, cleverly engineered design, making it both visually appealing and highly functional.

Whether you need a focused beam for accent lighting or a wider spread for ambient illumination, the Soltice delivers outstanding performance in any outdoor setting.



- Net Lumen Output (at Ta=25°C) 1794 lm
1513 lm
1455 lm
- Power Consumption 20 W
- System Efficacy 73-90 lm/W
- Chromacity 3-step MacAdam
- Colour rendering index > 90
- Colour temperature 3000 K, on request 2200 K, 2700 K, 4000 K, RGBW
- Wiring FIX, on request dimmable
- Optical System Reflector
- Beam Angle spot 15°
medium 35°
wide flood 60°
- Materials Housing: Die-cast aluminium
Cover: Extra clear polycarbonate
- Surface Finish Polyester powder paint
- Service Lifetime (Ta 40°C) 60,000 hours/L80/B15
- Dimmensions (L x W x H) 194 x 148 x 74 mm



Bollards



SOLARISTO

The Solaristo bollard seamlessly merges harmony with functionality, offering a sophisticated square design tailored for urban illumination. This versatile luminaire is available in three heights ranging from 0.12m to 0.7m, catering to diverse lighting needs. Its asymmetric or double asymmetric light distribution makes it an ideal choice for illuminating parks and pathways. Engineered for durability and performance, Solaristo boasts an IP65 rating for water resistance and IK08 for impact resistance. With a CRI exceeding 90, it delivers exceptional color rendition for a truly captivating ambiance.

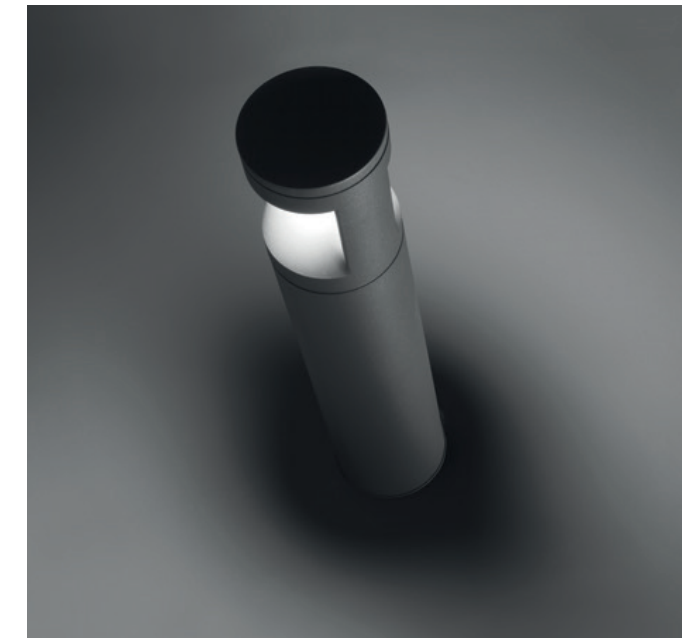


| | |
|---------------------------------|--|
| • Light Distribution | asymmetric double asymmetric |
| • Net Lumen Output (at Ta=25°C) | 119 lm 240 lm |
| • Power Consumption | 6 W 9 W |
| • System Efficacy | 20-27 lm/W |
| • Chromacity | 3-step MacAdam |
| • Colour rendering index | > 90 |
| • Colour temperature | 3000 K, on request 2200 K, 2700 K, 4000 K, RGBW |
| • Wiring | FIX, on request dimmable |
| • Optical System | Reflector |
| • Materials | Housing: Die-cast aluminium and extruded aluminium Cover: Extra clear PMMA |
| • Surface Finish | Polyester powder paint |
| • Service Lifetime (Ta 40°C) | 60,000 hours/L80/B15 |
| • Dimmensions (L x W x H) | 012 124 x 124 x 120 mm 035 124 x 124 x 350 mm 070 124 x 124 x 700 mm |

| | | | | | | | | |
|---------------------|-----|---------------------------|------------------|------------------|-----|---|----------|----------|
| 220-240V 50-60Hz | LED | CHROMATICITY 3 SDCM | CRI 90+ Ra | CCT 3000 K | ECG | ⊕ | IP 65 | IK 08 |
|---------------------|-----|---------------------------|------------------|------------------|-----|---|----------|----------|

NEBULA

The Nebula bollard is a minimalist masterpiece designed to enhance urban landscapes. Available in four heights from 0.385m to 1.185m, it offers versatile lighting solutions. With asymmetric or double asymmetric light distribution options, Nebula caters to various applications, from illuminating walkways and bike paths to creating an inviting ambiance in relaxation areas. Its robust construction, featuring IP65 and IK10 ratings, ensures durability and resistance to external factors. Nebula combines form and function, providing efficient and stylish lighting for modern outdoor spaces.



| | |
|---------------------------------|---|
| • Light Distribution | asymmetric double asymmetric |
| • Net Lumen Output (at Ta=25°C) | 260 lm 530 lm |
| • Power Consumption | 9 W 19 W |
| • System Efficacy | 28-29 lm/W |
| • Chromacity | 3-step MacAdam |
| • Colour rendering index | > 90 |
| • Colour temperature | 3000 K, on request 2200 K, 2700 K, 4000 K, RGBW |
| • Wiring | FIX, on request dimmable |
| • Optical System | Diffuser |
| • Materials | Housing: Die-cast aluminium and extruded aluminium Diffuser: opal polycarbonate |
| • Surface Finish | Polyester powder paint |
| • Service Lifetime (Ta 40°C) | 60,000 hours/L80/B15 |
| • Dimmensions (L x W x H) | 038 ø 140 x 385 mm 068 ø 140 x 685 mm 093 ø 140 x 935 mm 118 ø 140 x 1185 mm |

| | | | | | | | | |
|---------------------|-----|---------------------------|------------------|------------------|-----|---|----------|----------|
| 220-240V 50-60Hz | LED | CHROMATICITY 3 SDCM | CRI 90+ Ra | CCT 3000 K | ECG | ⊥ | IP 65 | IK 10 |
|---------------------|-----|---------------------------|------------------|------------------|-----|---|----------|----------|

CELESTIA SPARK

The Celestia Spark bollard offers understated elegance for urban environments.

Four height options ranging from 0.45m to 1.25m provide ideal illumination for walkways, cycleways, parks, and relaxation zones. Celestia Spark creates inviting and comfortable spaces by delivering a non-intrusive, pleasant light with a CRI exceeding 90. Its simple yet refined design seamlessly blends into various architectural styles.

Engineered for durability, the luminaire boasts IP65 and IK08 ratings, ensuring resistance to weather and impacts.



- Net Lumen Output (at Ta=25°C) 890 lm, 940 lm
- Power Consumption 12 W
- System Efficacy 74-78 lm/W
- Chromacity 3-step MacAdam
- Colour rendering index > 90
- Colour temperature 3000 K, 4000 K, on request 2200 K, 2700 K, RGBW
- Wiring FIX, on request dimmable
- Optical System Diffuser
- Materials Housing: Extruded aluminium
Diffuser: Extra clear polycarbonate
- Surface Finish Polyester powder paint
- Service Lifetime (Ta 40°C) 60,000 hours/L80/B15
- Dimmensions (L x W x H)

| | |
|-----|-----------------|
| 045 | ø 145 x 450 mm |
| 075 | ø 145 x 750 mm |
| 100 | ø 145 x 1000 mm |
| 125 | ø 145 x 1250 mm |

| | | | | | | | | | |
|---------------------|-----|---------------------------|------------------|------------------|------------------|-----|---|----------|----------|
| 220-240V 50-60Hz | LED | CHROMATICITY 3 SDCM | CRI 90+ Ra | CCT 3000 K | CCT 4000 K | ECG | ⏚ | IP 65 | IK 08 |
|---------------------|-----|---------------------------|------------------|------------------|------------------|-----|---|----------|----------|

Poles



SIRIUS LUMINA

Sirius Lumina is more than a luminaire; it's an interactive sculpture. Designed for ground installation, this new iconic product encapsulates light within a protective cage, merging technology with artistry. Its powerful, directional light emanates from a minimalist frame, creating a striking visual impact. Delivering exceptional color rendition with a CRI exceeding 90, illuminates environments with natural-looking light. The IP65 and IK08 ratings ensure durability and resistance against environmental factors. A harmonious blend of aesthetics and functionality, Sirius Lumina redefines the concept of outdoor lighting.



| | |
|-------------------------------|--|
| Net Lumen Output (at Ta=25°C) | 1170 lm |
| Power Consumption | 26 W |
| System Efficacy | 45 lm/W |
| Chromaticity | 3-step MacAdam |
| Colour rendering index | > 90 |
| Colour temperature | 3000 K, on request 2200 K, 2700 K, 4000 K, RGBW |
| Wiring | FIX, on request dimmable |
| Optical System | Diffuser |
| Materials | Housing: Die-cast aluminium and extruded aluminium Diffuser: Opal polycarbonate |
| Surface Finish | Polyester powder paint |
| Service Lifetime (Ta 40°C) | 60,000 hours/L80/B15 |
| Dimensions (L x W x H) | 150 x 150 x 2000 mm |



ASTRALITE

The Astralite range offers versatile lighting solutions for urban spaces. With a height of 2.4m, this luminaire caters to various applications like parks and walkways.



Delivering exceptional color rendition with a CRI exceeding 90, illuminates environments with natural-looking light. The fusion of functionality and aesthetics creates a harmonious blend of light and form.

Designed to withstand harsh conditions, the IP65 and IK08 ratings ensure durability and resistance against environmental factors.



- Net Lumen Output (at Ta=25°C) 680 lm, 750 lm
- Power Consumption 16 W
- System Efficacy 43-47 lm/W
- Chromacity 3-step MacAdam
- Colour rendering index > 90
- Colour temperature 3000 K, 4000 K, on request 2200 K, 2700 K, RGBW
- Wiring FIX, on request dimmable
- Optical System Diffuser
- Materials Housing: Die-cast aluminium and extruded aluminium
Diffuser: Extra clear polycarbonate
- Surface Finish Polyester powder paint
- Service Lifetime (Ta 40°C) 60,000 hours/L80/B15
- Dimmensions (L x W x H) ø 138 x 2400 mm
- Bottom part ø 160 mm

| | | | | | | | | |
|---------------------|-----|---------------------------|------------------|------------------|------------------|-----|----------|----------|
| 220-240V 50-60Hz | LED | CHROMATICITY 3 SDCM | CRI 90+ Ra | CCT 3000 K | CCT 4000 K | ECG | IP 65 | IK 08 |
|---------------------|-----|---------------------------|------------------|------------------|------------------|-----|----------|----------|

ORION BLAZE

We introduce the Orion Blaze outdoor luminaire, a versatile lighting solution designed to enhance urban environments. Available in Uno, Duo, or Trio configurations, delivers superior illumination with its advanced optical diffuser system.

Mounted on a sturdy 3-meter pole, this luminaire offers customizable color temperatures of 3000K or 4000K and a high CRI of over 90 for exceptional color rendition. Built to withstand harsh outdoor conditions, boasts IP65 protection against water, and dust, and IK08 impact resistance.

Experience the perfect blend of performance and aesthetics.



TRIO



UNO



DUO



- Net Lumen Output (at Ta=25°C) 1550 lm, 1650 lm
3100 lm, 3300 lm
4650 lm, 4950 lm
- Power Consumption 33 W, 66 W, 99 W
- System Efficacy 47-50 lm/W
- Chromacity 3-step MacAdam
- Colour rendering index > 90
- Colour temperature 3000 K, 4000 K, on request
2200 K, 2700 K
- Wiring FIX, on request dimmable
- Optical System Diffuser
- Materials Housing: Die-cast aluminium and extruded aluminium
Diffuser: Extra clear polycarbonate
- Surface Finish Polyester powder paint
- Service Lifetime (Ta 40°C) 60,000 hours/L80/B15
- Dimmensions (L x W x H) UNO 570 x 280 x 3000 mm
DUO 1100 x 280 x 3000 mm
TRIO 1100 x 540 x 3000 mm
- Bottom part ø 240 mm

| | | | | | | | | |
|---------------------|-----|---------------------------|------------------|------------------|------------------|-----|----------|----------|
| 220-240V 50-60Hz | LED | CHROMATICITY 3 SDCM | CRI 90+ Ra | CCT 3000 K | CCT 4000 K | ECG | IP 65 | IK 08 |
|---------------------|-----|---------------------------|------------------|------------------|------------------|-----|----------|----------|

STELARIS

Stelaris is the epitome of elegance and precision in urban lighting. Through a revolutionary approach to the side cut, Stelaris achieves a consistent aesthetic, creating a unified and sophisticated look.

Designed for optimal performance, the pole-mounted version excels in illuminating a variety of urban spaces. From bustling city streets and suburban roads to tranquil parks and pedestrian zones, delivers exceptional visibility and safety. Its special optics cater to both high and low traffic conditions, making it a versatile and effective lighting solution for any urban environment.



- Net Lumen Output (at Ta=25°C) 3362 lm
3210 lm
3362 lm
- Power Consumption 27 W
- System Efficacy 119-125 lm/W
- Chromacity 3-step MacAdam
- Colour rendering index > 80
- Colour temperature 3000 K, on request 2200 K, 2700 K, 4000 K, RGBW
- Wiring FIX, on request dimmable
- Optical System Lenses
- Beam Angle (C0-180, C90-270) parking 150° x 85°
pedestrian/cycle 125° x 45°
street 125° x 45°
- Materials Housing: Die-cast aluminium
Diffuser: Extra clear glass
- Surface Finish Polyester powder paint
- Service Lifetime (Ta 40°C) 60,000 hours/L80/B15
- Dimmensions (L x W x H) 415 x 200 x 175 mm
- Opening for pole ø 60 mm





where
tradition
meets
tomorrow

OMS, a.s.
Dojč 419, 906 02 Dojč, Slovakia
info@oms.sk
Tel.: +421 34 694 0811
Fax: +421 34 694 0888

www.omslighting